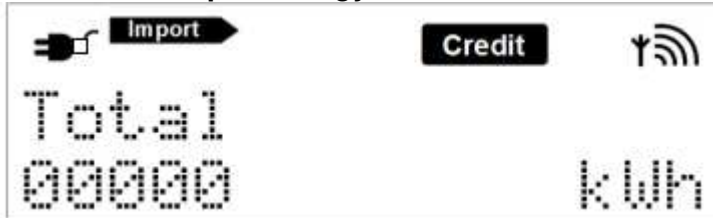


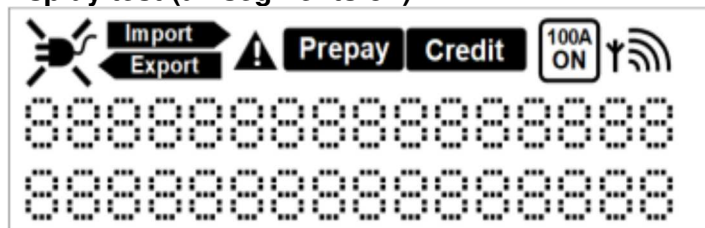
How to read your EMLITE EMA1 Single Phase meter

Menu A

Total Active import energy



Display test (all segments on)



Date



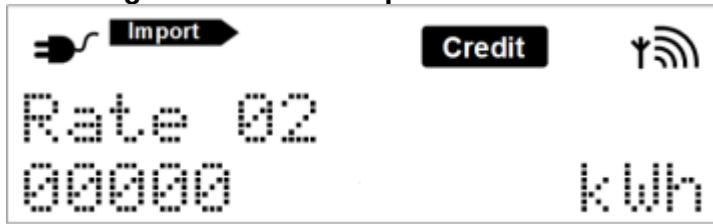
Time (local time)



Active rate message

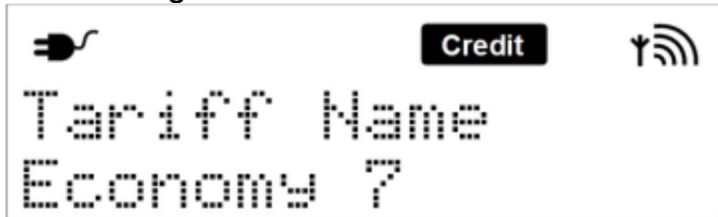


Rated register for active import



Other rates displayed dependent upon tariff.

Tariff message



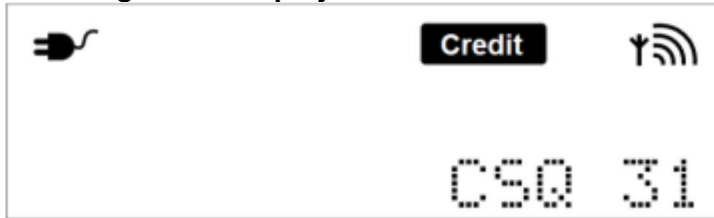
Display end



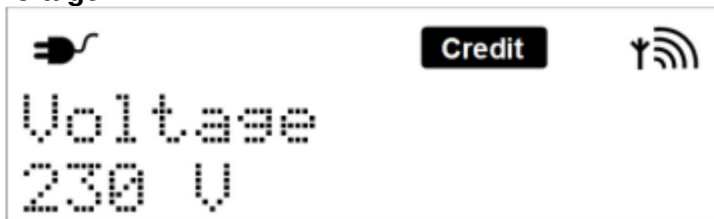
Menu B

Press Button B twice and hold Button A until CSQ displayed then use Button A to scroll

GSM Diagnostic Display



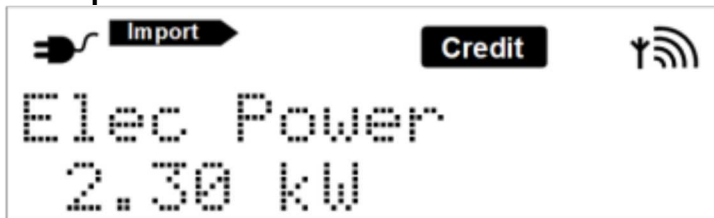
Voltage



Current



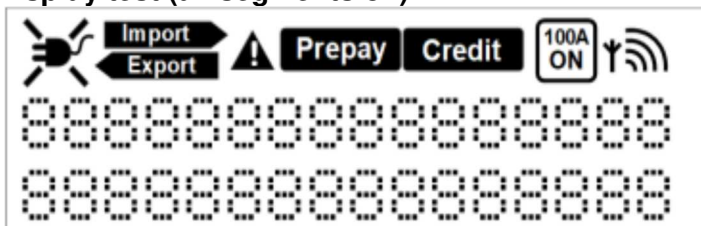
Active power



Power factor



Display test (all segments on)



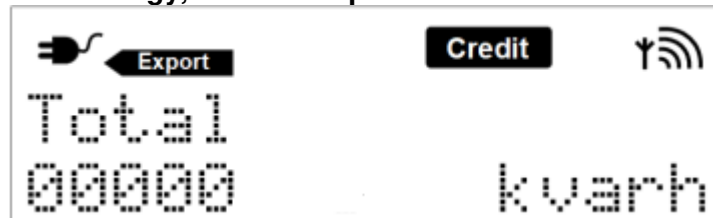
Total energy, active export



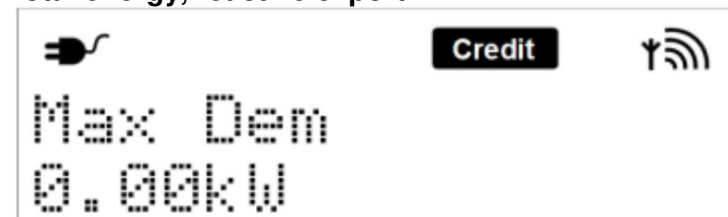
Total energy, reactive import



Total energy, reactive export



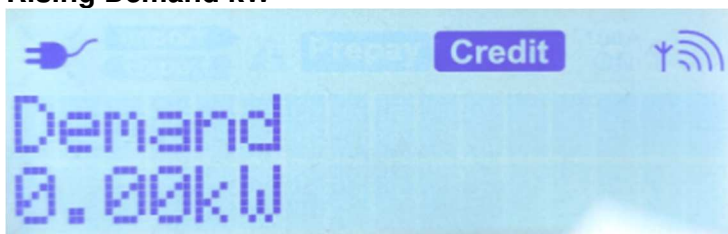
Total energy, reactive export



Maximum Demand kW



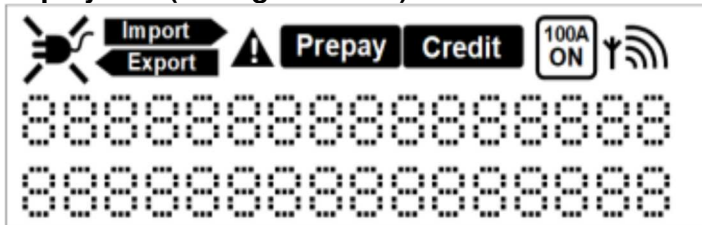
Rising Demand kW



Number of MD resets



Display test (all segments on)



Display end

