

Project EPIC

Work Package 1, Deliverable 1: Area Selection Document

Addendum 1: Agreed boundary changes to the Bristol North Fringe SPA

EPIC

Energy Planning Integrated with Councils



This report was produced for Project EPIC

Issue date 27/04/21

Version Final version

Written by: Christine Chapter & Frankie Mayo, Regen

Approved by: Johnny Gowdy, Regen

Regen, Bradninch Court. Exeter, EX4 3PL
T +44 (0)1392 494399 E admin@regen.co.uk www.regen.co.uk
Registered in England No: 04554636

All rights reserved. No part of this document may be reproduced or published in any way (including online) without the prior permission of Regen

1. Document purpose and associated project deliverable

The EPIC project is made up of several work packages. The first work package is the trial strategic area selection and the objective of this work package was to document the area selection process and also to define how Strategic Planning Areas (SPAs) will be mapped onto the electricity and gas networks in order to produce an integrated energy plan.

The scope of the SPAs selected was documented in the Area Selection Report (deliverable one of work package one for the EPIC project). This addendum to that report describes the changes to the boundary of the Bristol North Fringe SPA which were agreed after the area selection document was finalised.

2. Revisions to Bristol North Fringe SPA boundary

The West of England Combined Authority (WECA) and the South Gloucestershire unitary authority requested to revise the boundary of the Bristol North Fringe SPA used for the EPIC project. This change request was primarily to capture some key new developments in the area (both already proposed and expected) that would have significant additional energy needs, and, for the area used in the EPIC project to better align to the strategic master planning area.

To accommodate the change request three additional Electricity Supply Areas (ESAs) will now be included within the Bristol North Fringe SPA boundary for the EPIC project. These ESAs relate to primary sub-stations at Cairns Road, Abbeywood and Hewlett Packard and are shown in orange in Figure 1 (where the red area denotes the original area proposed for the EPIC project).

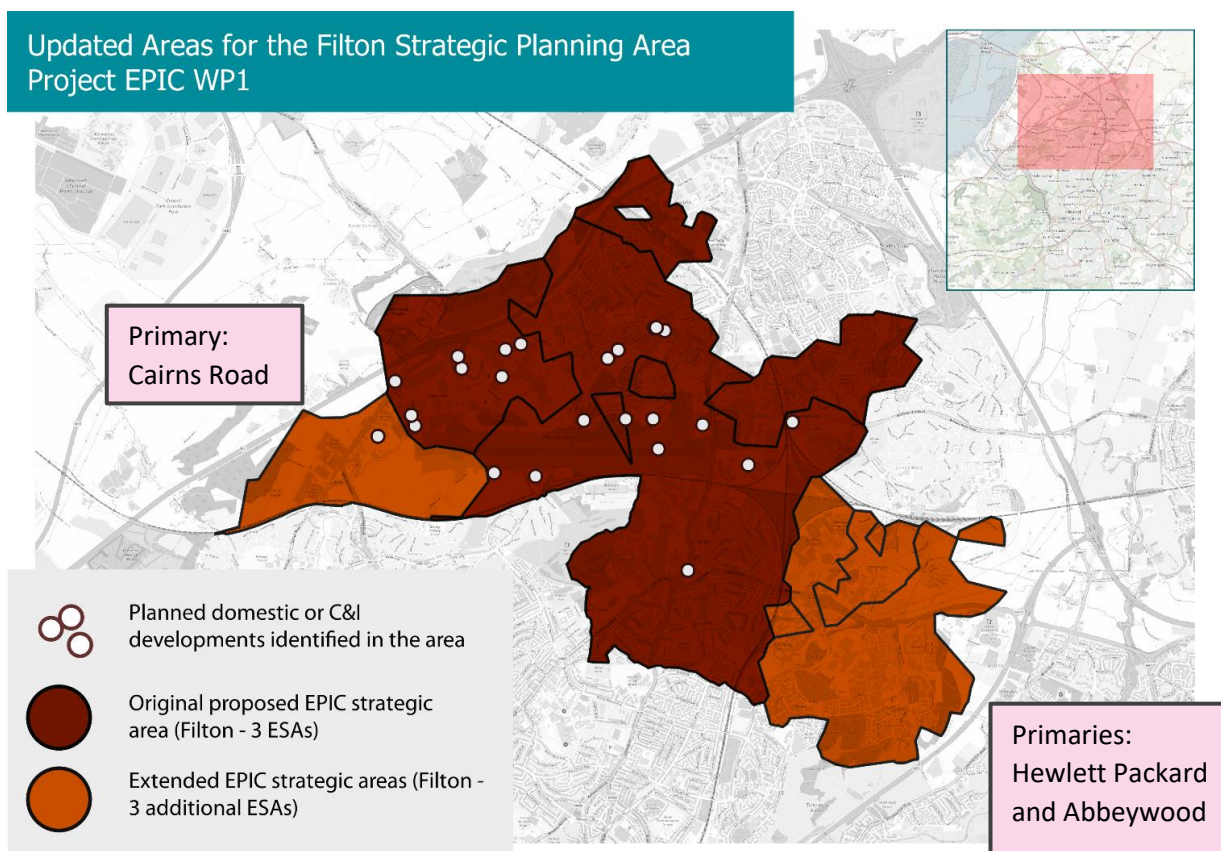


Figure 1 Updated ESA areas in Bristol North Fringe SPA for the EPIC project

Within the area served by the Cairns Road primary substation there is a 300 home development on the former Filton Airfield site with granted planning permission. A major indoor arena has also been earmarked for this site but planning permission has not yet been agreed.

Abbeywood Primary and Hewlett Packard both serve the area surrounding Bristol Parkway station. This area has the potential for significant development opportunities which will be promoted by the master planning work that is currently being undertaken. Feedback from WECA and South Gloucestershire Council suggest that the proposals that are likely to come forward here will be of sufficient scale to impact the existing network.

To ensure that the energy requirements for these proposed and expected new developments are captured, the EPIC project will include these areas in the ongoing analysis.

3. Interim learning from the EPIC area selection process

- a) A key consideration when defining the boundary of an SPA for inclusion in the EPIC process is examining the location of confirmed new developments that will have an impact on the energy networks. However, in this case, the project stakeholders felt that including areas where there is likely to be potential, future development was worthwhile given that these developments are likely to be of significant scale.
- b) In hindsight, more explanation should have been given to confirm the scope of the SPA boundaries with the project stakeholders. Although the SPA boundary had been identified early in the project development phase, stakeholders should also have been asked to explicitly confirm the SPA boundary in advance of the area selection report sign-off.