

Company Directive

STANDARD TECHNIQUE: OH4N/4

Notices, Signs & Labels for Overhead Lines

Author: Mike Chapman

Implementation Date: April 2015

Approved by



Policy Manager

Date: 23 April 2015

All references to Western Power Distribution or WPD must be read as National Grid Electricity Distribution or NGED

NOTE: The current version of this document is stored in the NGED Corporate Information Database. Any other copy in electronic or printed format may be out of date. Copyright © 2022 National Grid Electricity Distribution

Implementation Plan

Introduction

This Standard Technique contains the requirements for standard signs to be used within Western Power Distribution.

Main Change

With the introduction of a single emergency telephone number of 0800 6783 105, there is a requirement for the specification of signage that has an emergency telephone number to be changed, this change reflects that requirement.

Following the issue of ST: OH4U this change introduces a newly designed Fibre Optics label which is more fit for purpose.

Impact of Changes

Whilst this change introduces a new emergency contact number for the whole company there will be little impact on the business as the old emergency numbers assigned to existing signage will be retained as valid contact numbers.

Implementation Actions

Team Managers should brief their staff that they should continue to use the existing signage until stocks have been depleted, at which time the new signs and codes where applicable will be introduced.

Logistics shall when existing stocks of notices have been exhausted introduce the new signs and item codes where applicable.

Surf Telecoms should now ensure that where Fibre Optics cable has been installed on poles the label depicted in Fig 16 Fibre Optic Label for Wood Poles should now be used.

Implementation Timetable

These changes are not retrospective.

Existing stocks bearing the old emergency numbers will be used first.

The new signs will be introduced together with the new Item number where applicable when existing stocks are depleted.

Document Revision & Review Table		
Date	Comments	Author
23/04/2015	<p>WPD has introduced a single emergency telephone number 0800 6783 105 all signage that has emergency telephone numbers have been amended to reflect this change.</p> <p>New design Fibre Optics label introduced which replaces the existing Fig. 16</p>	Mike Chapman
03/09/2014	<p>Para 4.1 changed, no longer requiring colour plates to be fitted to non-climbing legs. Instead, colour plates shall, in future, be fitted to be both “outside” faces of the climbing legs.</p>	Sven Hoffmann
09/01/2014	<p>Figs 18a, b & c – Amendments made to fishing signage in line with changes to national guidance document Safety, Health and Environment Angler Safety - Managing Risks Associated with Angling in Close Proximity to Overhead Electric Power Lines.</p>	Mike Chapman
27/09/2013	<ol style="list-style-type: none"> 1. General Clarification of Stocked (inclusion of shops number where applicable) & Non stock items. 2. Amendments to Fig 3a & 3b dimensions 3. Fig 5 - Removal for requirement for emergency numbers on Tower Safety Signs. 4. New Appendix B – Approved Suppliers of Signage 	Mike Chapman
19/3/2013	<ol style="list-style-type: none"> 1. Contents Page Included 2. Section 2.5 Other Notices included which makes reference to where overhead lines cross features such as fishing areas. 3. Section 4.1 Steel Tower Circuit Plates measurement changed to 2m to be consistent with measurement shown in Fig 1 and clarification of single circuit tower colour plate requirements. 4. Fig 8 & 9 - Insufficient colour variations to allow all circuits to have an individual CIP therefore allowance made to use Chevron based CIP in the Midlands. 5. New Danger of Death signs with Emergency Contact Telephone Numbers. 6. Section 11 Decayed / Suspect / Limited added to text for clarity. 7. Section 12 Fibre Optics added to text for clarity. 8. Section 13 Introduction of Hi reflective strips for use to assist in switching operations. 9. Inclusion of Fig 20 ESQCR requirement for the design, dimensions and Colour of safety signs. 	Mike Chapman

CONTENTS

1.0	SCOPE	5
2.0	SAFETY SIGNS FOR SUPPORTS	5
3.0	SUPPORT NUMBERS	6
4.0	CIRCUIT IDENTIFICATION COLOUR PLATES	7
5.0	PHASE PLATES	7
6.0	SUBSTATION NAME AND NUMBER PLATE	7
7.0	AIR BREAK SWITCH DISCONNECTOR (ABSD)	7
8.0	PROTECTIVE MULTIPLE EARTH (PME) POSITIONS	8
9.0	EARTHWIRE IDENTIFICATION PLATE	8
10.0	RAILWAY CROSSING NOTICES	8
11.0	DECAYED / SUSPECT / LIMITED LABELS	8
12.0	FIBRE OPTICS	8
13.0	HI REFLECTIVE STRIPS	8
	APPENDIX A - GA DRAWINGS	9
	APPENDIX B - APPROVED SUPPLIERS OF SIGNAGE	35
	APPENDIX C - SUPERSEDED DOCUMENTATION	36
	APPENDIX D - ASSOCIATED DOCUMENTATION	36
	APPENDIX E - IMPACT ON COMPANY POLICY	36
	APPENDIX F - IMPLEMENTATION OF POLICY	36
	APPENDIX G - KEY WORDS	36

1.0 SCOPE

1.1 The Electricity Safety, Quality and Continuity Regulations contain requirements for application of approved Safety Signs to LV and HV supports.

1.2 This document contains the requirements for standard signs to be used within Western Power Distribution. This ST must be read in conjunction with the following Standard Techniques:-

- ST:OH3A and ST:OH5A - Inspection of Overhead Lines
- ST:OH3F - Overhead Line Records of Risks to Public and Risk Reduction Actions
- ST:OH4M - Anti-Climbing Devices for HV Lines Up to and Including 132kV

2.0 SAFETY SIGNS FOR SUPPORTS

2.1 Safety Signs for Steel Towers

Positioning of signs shall be as shown in fig 1.

Steel towers shall be fitted with the combined Property/ Safety plate (as shown in fig 4) and this shall be positioned such that it faces the normal origin of supply except where the plate may be come obscured.

In addition each tower shall be fitted with a Safety Sign (as shown in fig 5). The Safety Sign shall be mounted on steel straps (WPD 43-95/12) and fixed to the opposite tower face to that used by the Property/ Safety plate.

There are several different designs of steel towers and for that reason Safety Signs may have to be mounted in different positions. However all signs must be placed above the anti-climbing guard and preferably suspended from a horizontal tower bracing adjacent to the tower leg fitted with step bolts.

On towers considered to be vulnerable to unauthorised climbing two additional Safety Signs shall be fitted to provide notice of warning on each face of the tower.

Danger of Death notices must meet the dimensional requirements of the Electricity Supply Quality and Continuity Regulations outlined in Appendix 'A' Fig 20.

2.2 Safety Signs for Wood Poles

Positioning of signs shall be as shown in fig 2 but at a minimum height of 2m.

Single poles which are not susceptible to unauthorised climbing shall be fitted with one Safety Sign (as shown in fig 3a or b) facing the direction from which the person is most likely to approach.

Two pole structures such as 'H Poles' shall be fitted with two Safety Signs, one facing outward on each pole.

Where wood poles are in a location susceptible to unauthorised climbing they shall be fitted with a minimum of two Safety Signs dependent on risk and placed in such a direction as to be most effective.

Danger of Death notices must meet the dimensional requirements of the Electricity Supply Quality and Continuity Regulations outlined in Appendix 'A' Fig 20.

2.3 Safety Signs in 'High Risk' Areas

In deciding the need for additional Safety Signs it will be necessary to consider the normal use of the land and other factors which may increase the probability of unauthorised climbing.

Whilst it is not possible to define where a support may be vulnerable the following examples are listed as being suggestive of high risk areas which may require additional signs:-

- Schools.
- Children's play areas.
- Caravan or Chalet sites where occupancy is for a short period.
- Areas where experience has shown problems may exist (e.g. illegal play areas and areas of high vandalism).
- Recreational Site – Boating areas including Boat Storage, Parks and Fishing Areas etc.

Site specific warning signs for such activities as kite flying etc. can be found within the purchasing catalog and shall be fitted where appropriate.

2.4 Safety Signs for Concrete or Steel Masts

Because of the wide variations in the design of concrete and steel masts in service a typical drawing can not be provided for the positioning of warning notices. However the general principle as outlined above should be adopted in choosing the number and position of Safety Signs.

2.5 Other Notices

Where overhead lines cross features such as the entrance to all camping and caravan site fields (fig 17), banks of fishing grounds (18a, 18b and/or 18c), railway crossing navigable waterway crossings (fig 17) etc. Additional signs are required further details can be found in ST:OH5A.

3.0 SUPPORT NUMBERS

3.1 Steel Tower Number Plates

Steel towers shall be fitted with number plate (as shown in fig 7) which should be fitted below the Property/Safety Plate.

3.2 Wood Pole Numbers

All wood pole supports shall be fitted with pole numbers (as shown in fig 6) at a minimum height of 2m above ground.

4.0 CIRCUIT IDENTIFICATION COLOUR PLATES

4.1 Steel Tower Circuit Plates

Circuit colour plates (as shown in fig 8a or b) shall be fitted to all climbing legs (any leg fitted with step bolts) of steel tower supports. The plates shall be fixed under step bolts at flag bracket height, at 2m below the lowest conductor or jumper (or immediately below any Cable Sealing end platform), and below each crossarm.

Plates shall be fitted on both outside faces of the climbing leg immediately below the crossarm levels (a total of 8 plates will be required per climbing leg).

4.2 Circuit Plates for Wood Poles

Circuit colour plates (as shown in fig 9a or b) shall be fitted above the Safety Sign on all 132kV wood pole supports.

Circuit plates should also be fitted on each member of 'H Pole' supports carrying dual circuit 11kV or 33kV lines.

5.0 PHASE PLATES

Phase plates (as shown in fig 10) shall be mounted next to the Property/Safety Sign on terminal and junction steel tower supports.

6.0 SUBSTATION NAME AND NUMBER PLATE

11kV pole mounted transformer positions shall be fitted with a plate denoting the substation name and number above the Safety Sign (see fig 2) and at a minimum height of 2m.

7.0 AIR BREAK SWITCH DISCONNECTOR (ABSD)

7.1 ABSD Classification Label

Air Break Switch Disconnector operational classification category shall be fitted (e.g. 2F denoting Class 2 able to close on to a suspected Fault) to the supports on the right hand side of the switch operating handle.

The relevant classification reference should be made up with individual characters mounted on an aluminum strip (see fig 6).

7.2 ABSD Plant Label

The unique plant number for an ABSD can be produced in the same way as the pole numbering (see fig 6) and shall be fitted in accordance with ST: OC 12C.

8.0 PROTECTIVE MULTIPLE EARTH (PME) POSITIONS

A PME plate (see fig 11) shall be fitted where a PME system is carried on an LV pole at which the neutral conductor can be sectionalised. The plate should be fixed immediately beneath the neutral insulator.

9.0 EARTHWIRE IDENTIFICATION PLATE

An Earthwire Identification Plate (see fig 12) shall be fitted where a continuous separate earthwire is used on an LV overhead system. The plate should be fixed immediately beneath the insulator carrying the earthwire.

10.0 RAILWAY CROSSING NOTICES

As part of the agreement with Network Rail, where overhead lines cross railway tracks a notice shall be erected (see fig 13).

This notice was agreed by Network rail on the 3rd of September 2003.

The notice shall be erected on railway property at each side of the railway tracks.

11.0 DECAYED / SUSPECT / LIMITED

Decayed / suspect and Limited pole labels (fig 15a, b or c) shall be fitted in line with ST: OH5B.

12.0 FIBRE OPTICS

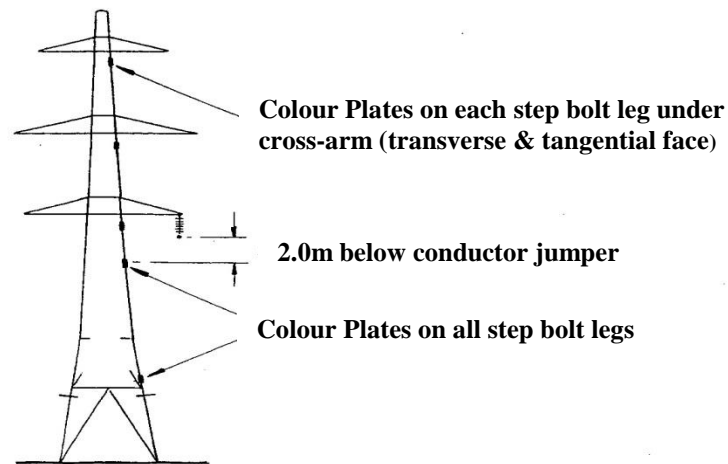
All structures carrying fibre optics shall be labeled (see fig 16)

13.0 HI REFLECTIVE STRIPS

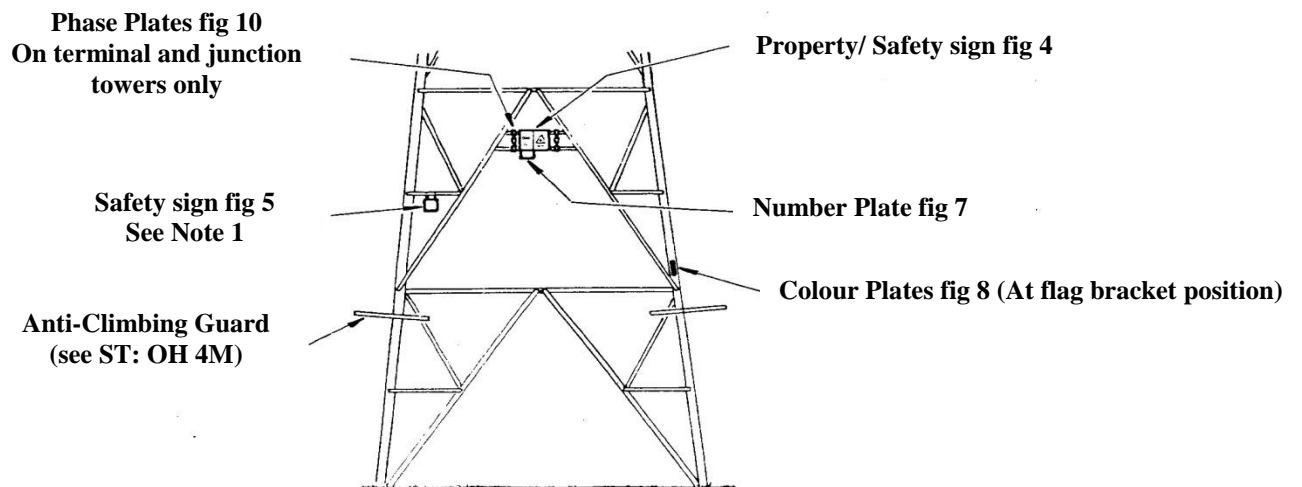
HI Reflective Strips are reflective from over 400m distance when a light is shone on them and should enable an operator to locate a switch quicker and more safely.

Fig 19a can be fitted to sectionalisers and reclosers & Fig 19b can be fitted to ABSD's. The strips should be fitted as and when, where it is believed it will assist operators finding their location during darkness.

They should be applied in a vertical position where possible in the likely direction of approach. Where this is ambiguous then they can be wrapped around the pole but this must be just below the bottom of item of plant.



Position of Circuit Identification Colour Plates

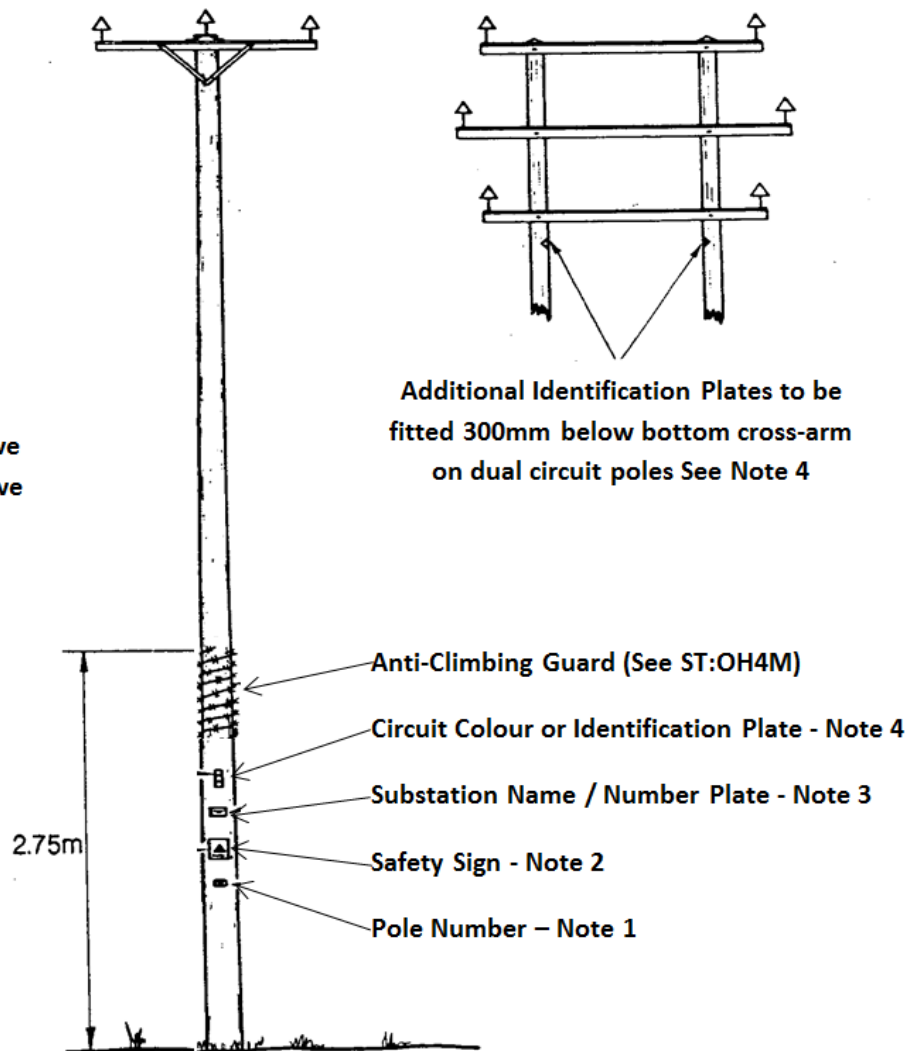


Note

Safety signs to be fitted facing opposite direction to Property /Safety sign.
In areas susceptible to unauthorised climbing additional Safety Signs shall be fitted.

Fig 1 Position of Signs on Steel Towers

Type of signage and the relative position shown is for illustrative purposes only.



Notes

- 1 Pole Numbers as shown in fig 6 shall be fitted on all LV, 11kV, 33kV and 66kV Supports in line with 3.2 above and shall be placed at a minimum height of 2m.
- 2 Safety Signs as shown in fig 3 shall be fitted on all LV and HV supports and shall be placed at a minimum height of 2m.
3. Substation name and number plate shall be fitted at pole-mounted transformer positions and shall be placed at a minimum height of 2m.
- 4 Circuit colour palates as shown in fig 9a or b shall be fitted on all 66 & 132kV supports. Each member of an 11kV or 33kV dual circuit poles shall be fitted with identification plates as shown in fig 14 they shall be placed at a minimum height of 2m.

Fig 2 Position of Signs on Poles



NOTES:

1. Material - 300 X 220mm, 1.5mm ABS 4 x 6mm Holes @ 12mm Centres to BS5378 Pt. 1
2. Colours & Legend - Yellow Background with Black Legend 14mm Helvetica Font
3. Plates shall be supplied bent to 150mm Radius for Wood Pole Mounting
4. Emergency Telephone Numbers: 0800 6783 105
5. Unique Shops Number: 30535

Fig 3a Safety Sign for Wood Pole E.M., W.M. & S. West



NOTES:

1. Material - 300 X 220mm, 1.5mm ABS 6 x 6mm Holes @ 12mm Centres to BS5378 Pt. 1
2. Colours & Legend - Yellow Background with Black Legend 11.4mm Helvetica Font.
3. Plates shall be supplied bent to 150mm Radius for Wood Pole Mounting.
4. Emergency Telephone Number: 0800 6783 105
5. Unique Shops Code - 37140

Fig 3b Safety Sign for Wood Pole South Wales



Note

1. Signs can be of Vitreous Enamel on 1.5mm (16 BG) iron plate (Non-stock) or 3mm ABS the shops codes above identifies the contracted supplier of the ABS plastic sign; where Vitreous Enamel finished signs are required these will need to be purchased locally, details of a supplier can be found in Appendix B.
2. Emergency Telephone Number: 0800 6783 105
3. Unique E Code - 30537

Fig 4 Property/Safety Sign For Steel Towers



315 x 300mm
 3mm ABS. Yellow
 4 x 13mm Holes @ 14.5mm Centers



NOTES:

1. Signs can be of Vitreous Enamel on 1.5mm (16 BG) iron plate or 3mm ABS The shops codes below identify the contracted supplier of the ABS plastic signs. Where Vitreous Enamel finished signs are required these will need to be purchased locally, details of a supplier can be found in Appendix B.

2. Shops Numbers

- English – 30531
- Bi-Lingual - 37043

Fig 5 Safety Sign For Steel Towers

Individual characters punched out from a YELLOW aluminium strip



MATT BLACK retaining strip

Individual embossed / raised characters coloured black on yellow

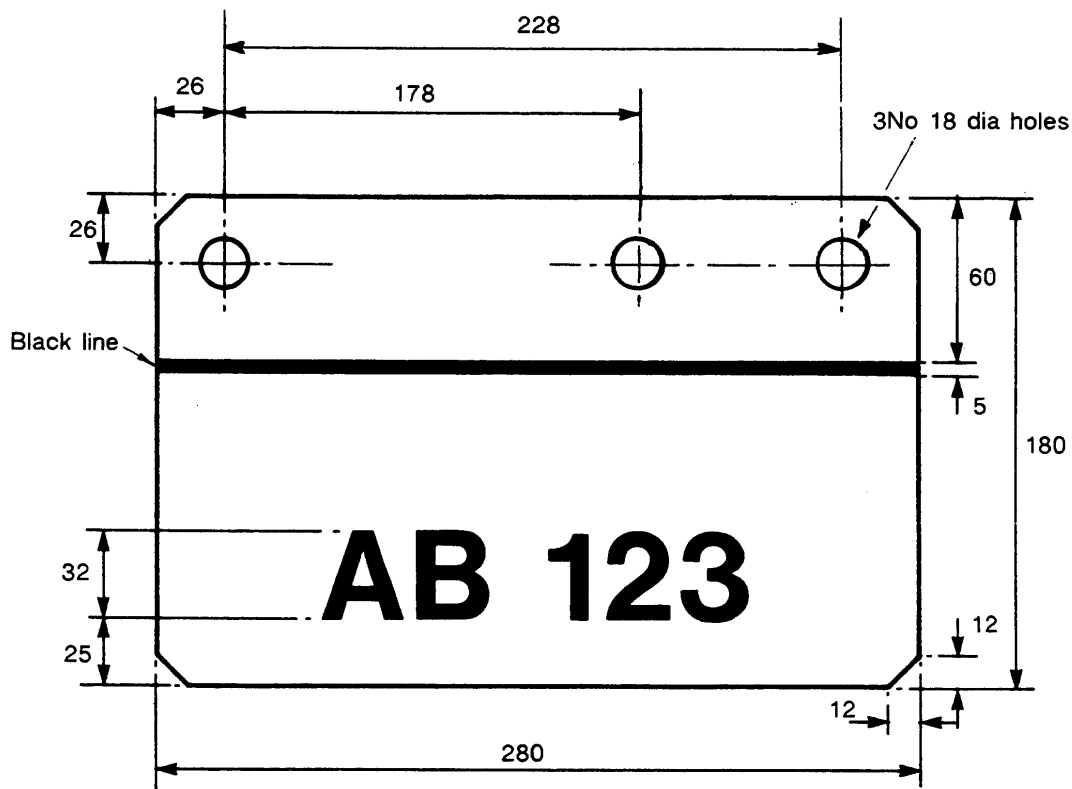


Aluminium retaining strip

Note:

Characters must be identifiable even if colours have been completely degraded by UV radiation, details of a supplier can be found in Appendix B.

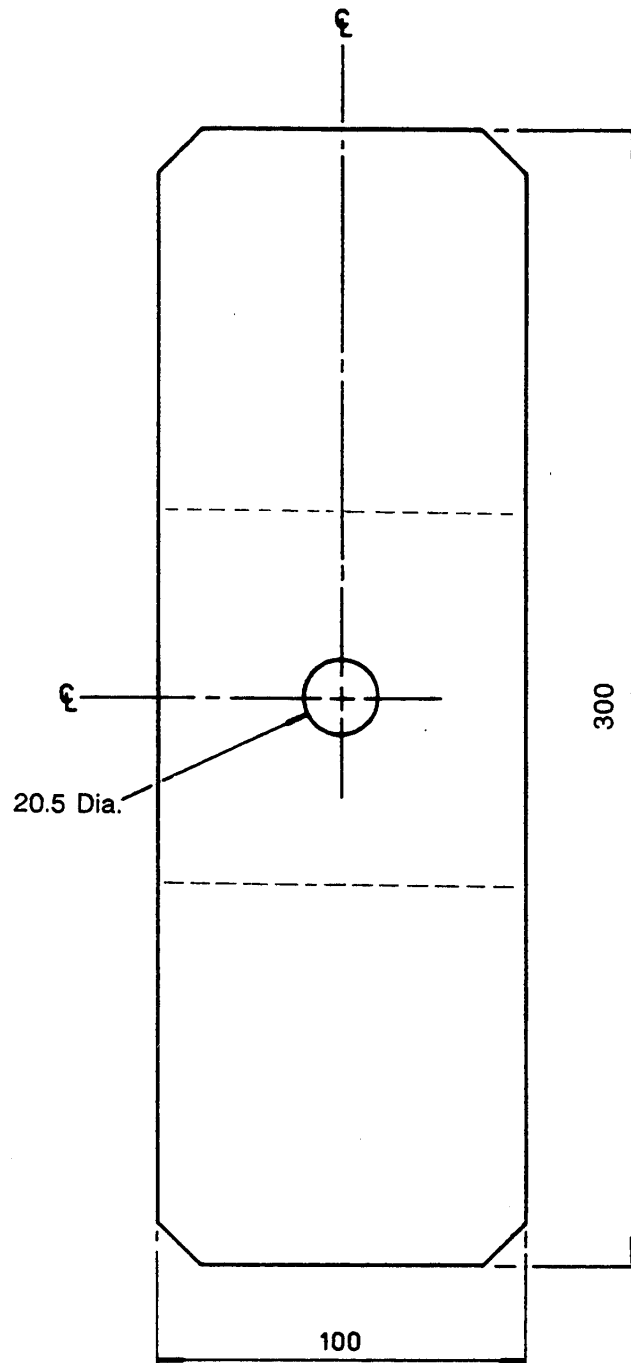
Fig 6 Examples of Number Plate Systems for Wood Poles



Notes

1. All dimensions in millimetres
2. Tower number shown is typical only. Lettering required as quoted on order to be symmetrically spaced. (N.B. Fixing holes must be handed as shown on drawing)
3. Lettering to be in BLACK (Helvetica Medium type face or of an equivalent font size so that it can be easily read) on WHITE background; back of plate and line to be in BLACK.
4. Non Stock item, details of a supplier can be found in Appendix B.
5. Characters must be identifiable even if colours have been completely degraded by UV radiation or have long term UV degradation properties. Acceptable number plates can be vitreous enamelled finish on 1.5mm (16 BG) iron plate, embossed or characters individually punched out so as to ensure legibility as per fig 6 but as item 3 above.

Fig 7 Number Plate for Steel Towers



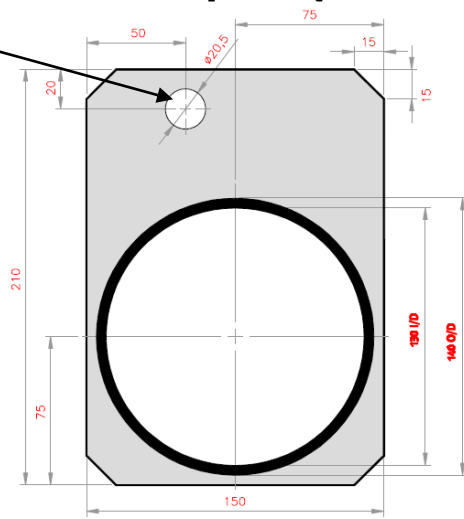
Notes

1. All dimensions in millimetres.
2. Plates to be coloured in 100mm bands or single colour as specified on order. Back of plated to be BLACK
3. Non Stock item, to be sourced locally, unless otherwise agreed and stated on order, signs to be vitreous enamelled finish on 1.5mm (16 BG) iron plate, details of a supplier can be found in Appendix B.

Fig 8a Circuit Colour Plate for Steel Towers

Basic Shape Template

Position of fixing hole for illustration only, can be along centre line of plate final position to be confirmed by requester.



NOTES

Materials

Plates to be of 16 gauge (1.6mm) Steel, with Vitreous Enamel to the following colours.

COLOURS:-

Face of plates to be GREY background and symbols to be COLOURED as specified.

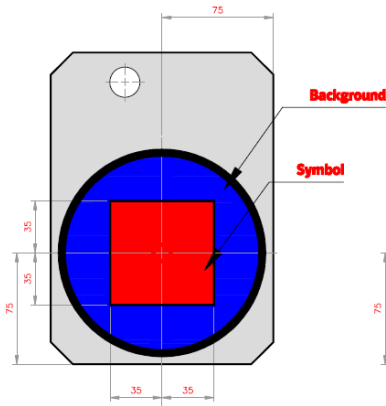
Colours to conform to B.S. 308 C 1996 as follows:-

- No.166 - BLUE
- No.218 - GREEN
- No.355 - YELLOW
- No.538 - RED
- No.693 - GREY
- WHITE
- BLACK

Fixing bolt assembly to include FIBRE washers

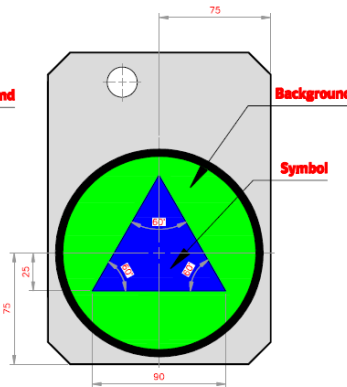
TYPE No. 1 - SQUARE

(Red SQUARE on Blue)



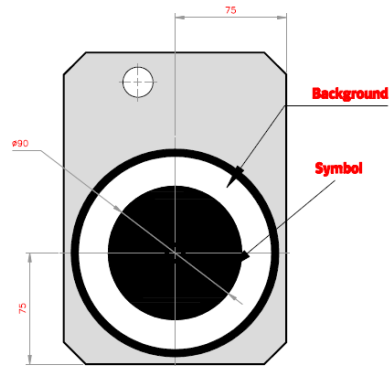
TYPE No. 2 - TRIANGLE

(Blue TRIANGLE on Green)



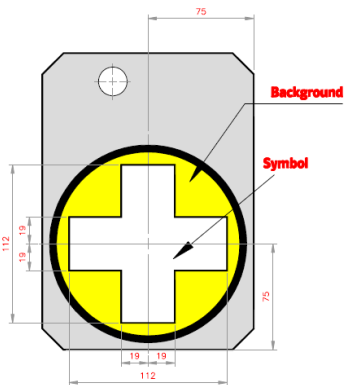
TYPE No. 3 - SPOT

(Black SPOT on White)



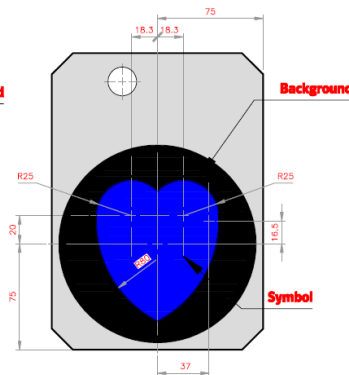
TYPE No. 4 - CROSS

(White CROSS on Yellow)



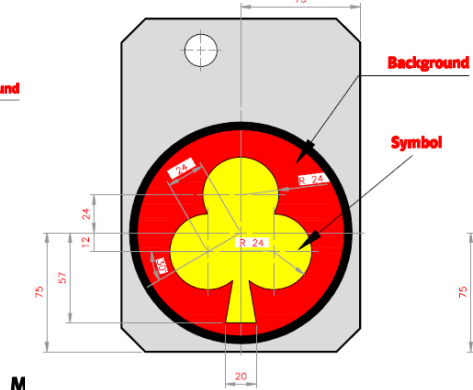
TYPE No. 5 - HEART

(Blue HEART on Black)



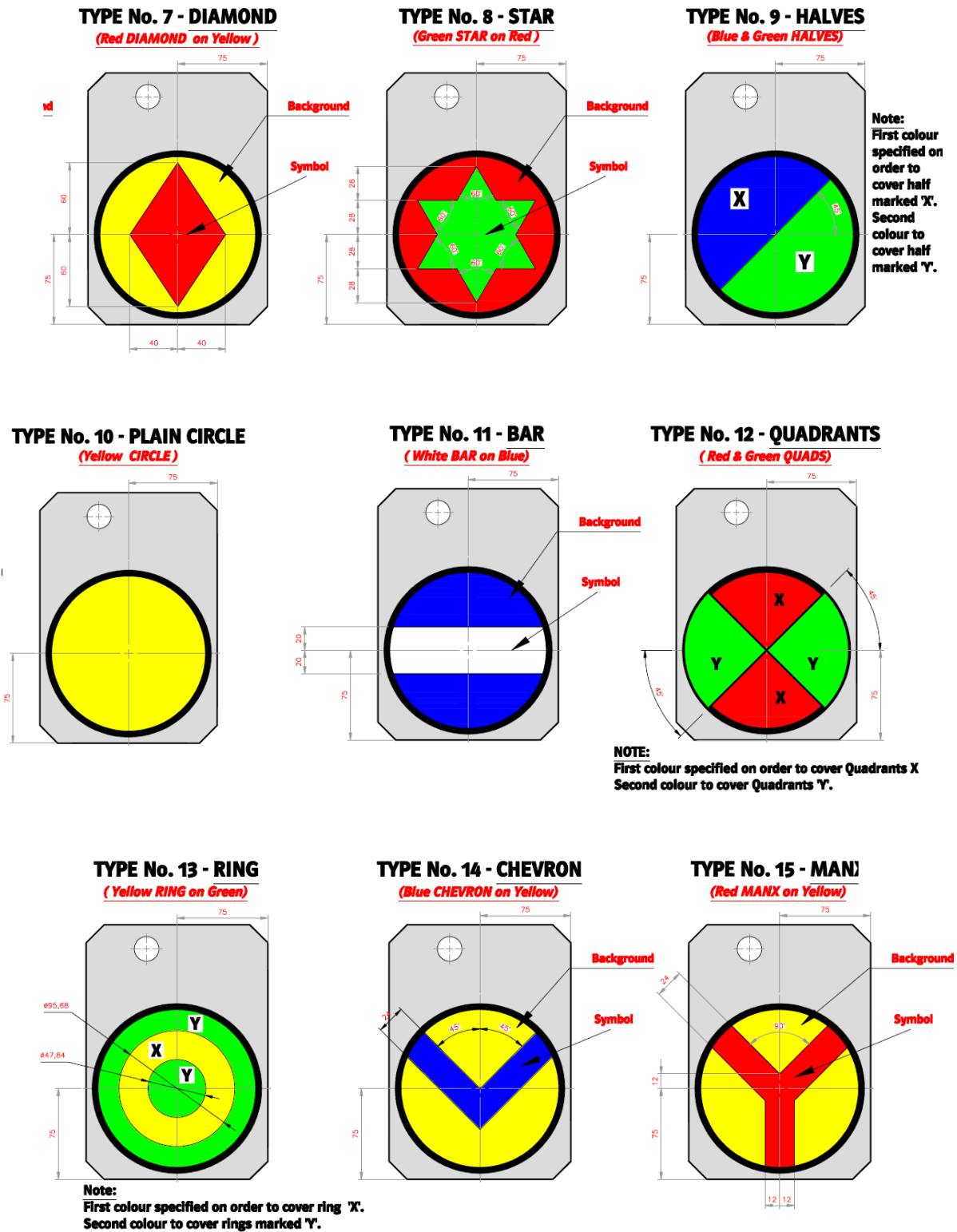
TYPE No. 6 - CLUB

(Yellow CLUB on Red)



NOTE: Non Stock Item, to be sourced locally, details of a supplier can be found in Appendix B.

Fig 8b Circuit Colour Plate for Steel Towers (Midlands)

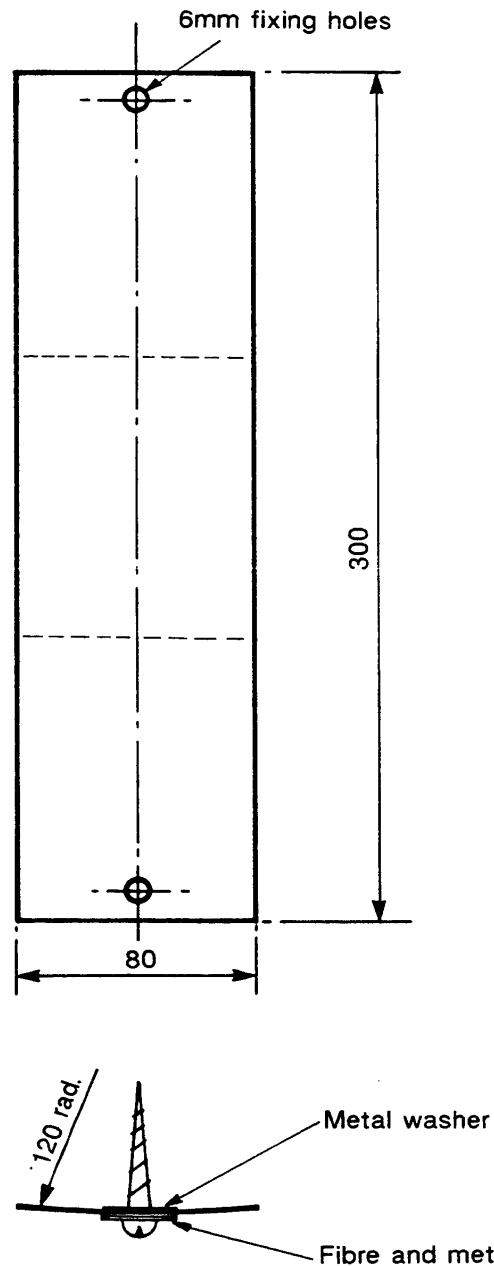


DESCRIPTION NOTE

(Blue CHEVRON on Yellow) is an example of the way that a CIP Colour Combination is described, the Symbol colour followed by the Circle Background colour; An example is shown under the name of each symbol. This will match the sample colouring of the Symbol design shown on the drawing. Symbol colours are indicative only. Actual colour combinations to be specified with each order.

NOTE: Non Stock Item, to be sourced locally, details of a supplier can be found in Appendix B.

Fig 8b Circuit Colour Plate for Steel Towers (Midlands) Cont.



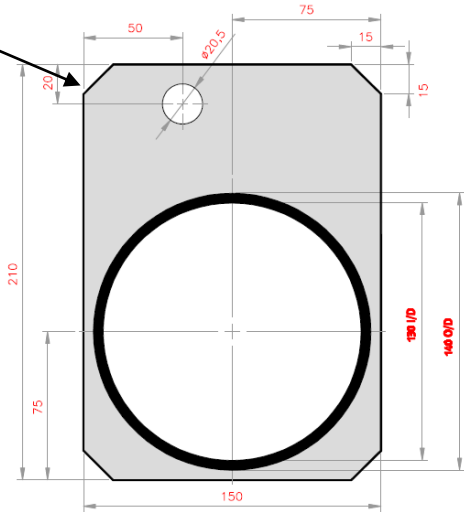
Notes

1. All dimensions in millimetres.
2. Plates to be coloured in 100mm bands or single colour as specified on order.
3. Non Stock Item, to be sourced locally, unless otherwise agreed and stated on order, plates to be non-reflecting stove lacquered finish on 1.2mm (18 s.w.g.) sheet aluminium. Back of plate to be Alocrom finished, details of a supplier can be found in Appendix B.
4. Plates to be supplied complete with 2 x 40mm No 12 galvanised cup headed screws; 4 x metal washers and 2 x fibre washers.

Fig 9a Circuit Colour Plates for 132kV Wood Poles

Basic Shape Template

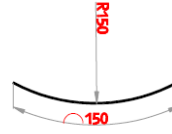
Position of fixing hole for illustration only, can be along centre line of plate final position to be confirmed by requester.



NOTES

Materials

Plates to be of 16 gauge (1.6mm) Steel, CURVED ACCROSS MINOR AXIS TO 150mm RADIUS, with Vitreous Enamel to the following colours.



COLOURS:-

Face of plates to be GREY background and symbols to be COLOURED as specified.

Colours to conform to B.S. 308 C 1996 as follows:-

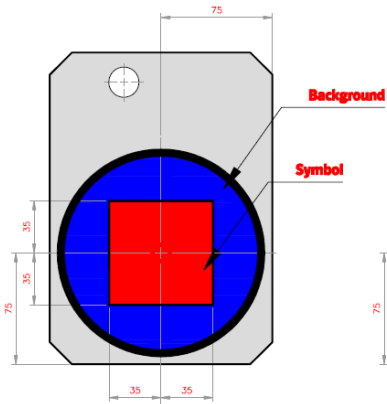
- No.166 - BLUE
- No.218 - GREEN
- No.355 - YELLOW
- No.538 - RED
- No.693 - GREY
- WHITE
- BLACK

FIXING

M16 coachscrew & M16 washers

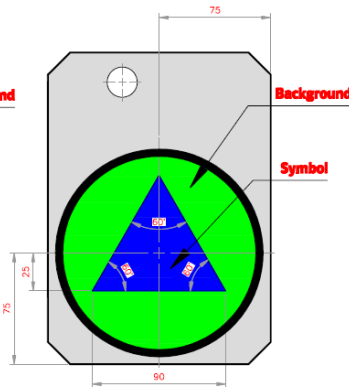
TYPE No. 1 - SQUARE

(Red SQUARE on Blue)



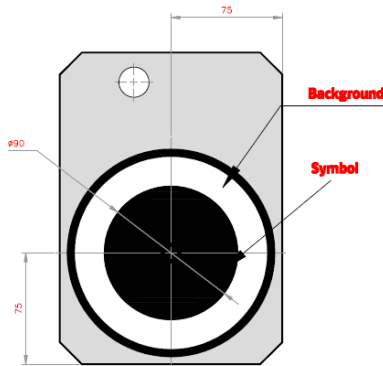
TYPE No. 2 - TRIANGLE

(Blue TRIANGLE on Green)



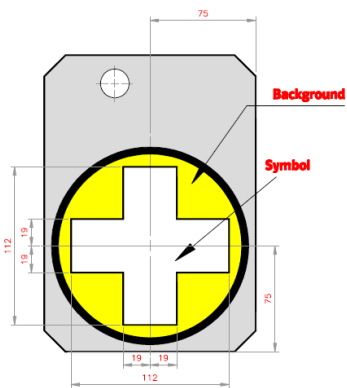
TYPE No. 3 - SPOT

(Black SPOT on White)



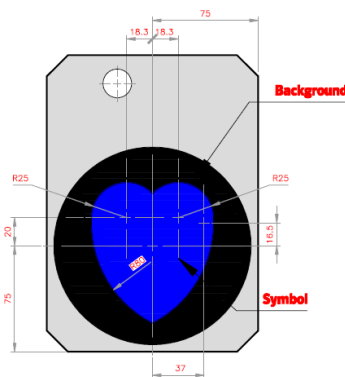
TYPE No. 4 - CROSS

(White CROSS on Yellow)



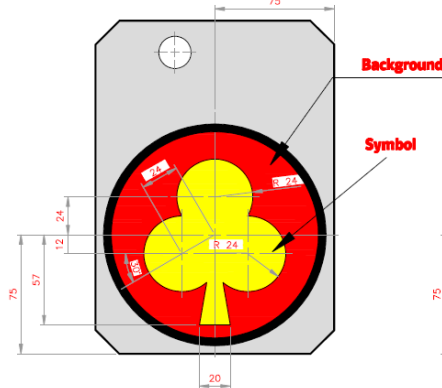
TYPE No. 5 - HEART

(Blue HEART on Black)



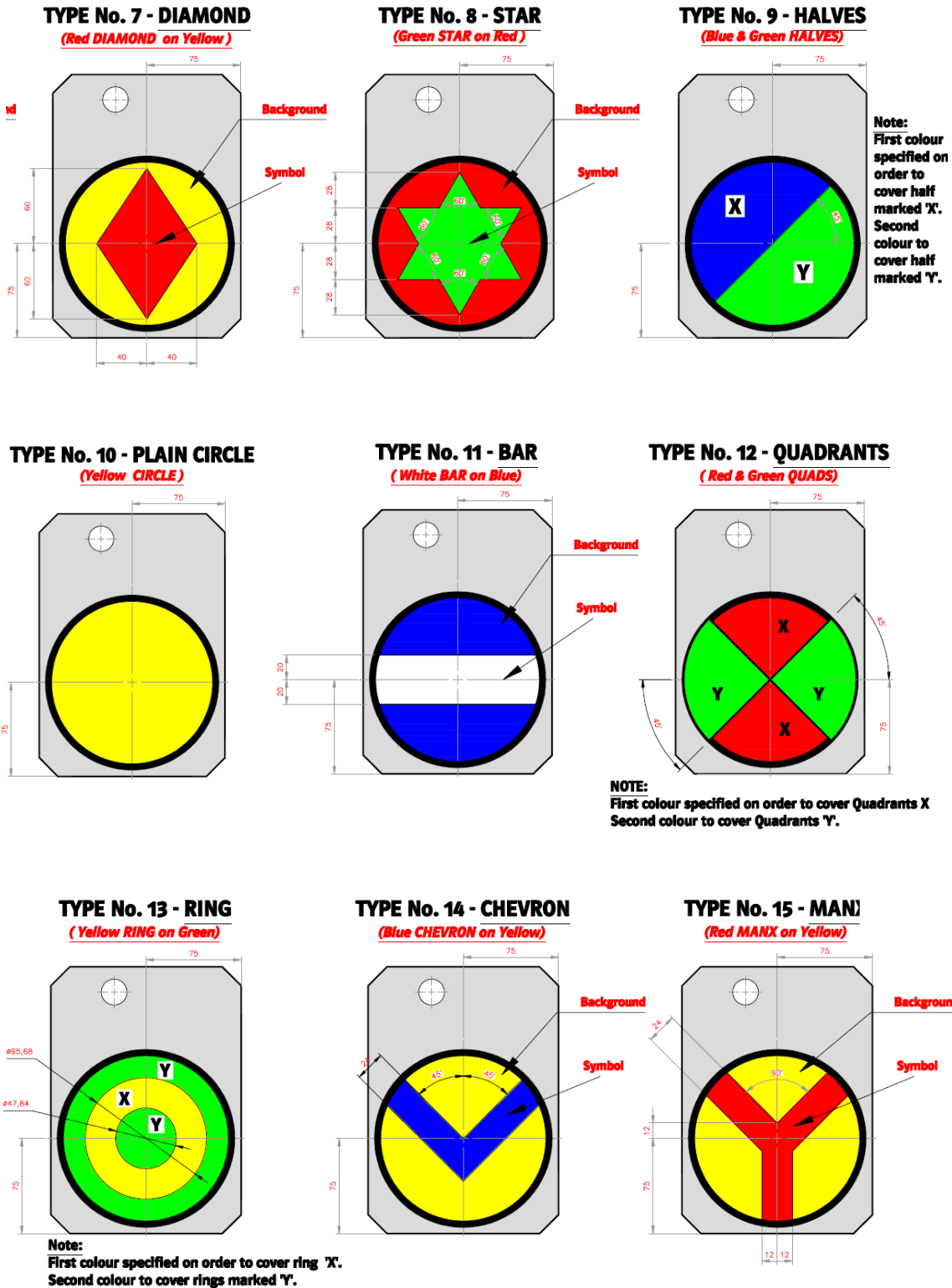
TYPE No. 6 - CLUB

(Yellow CLUB on Red)



NOTE: Non Stock Item, to be sourced locally, details of a supplier can be found in Appendix B.

Fig 9b Circuit Colour Plate for 132 kV Wood Poles (Midlands)

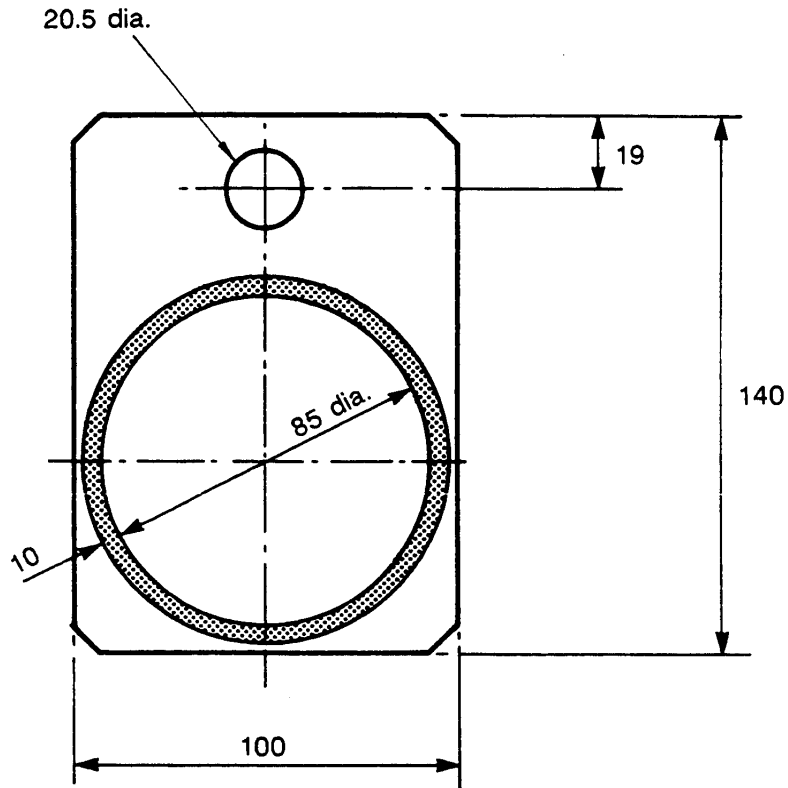


DESCRIPTION NOTE

(Blue CHEVRON on Yellow) is an example of the way that a CIP Colour Combination is described, the Symbol colour followed by the Circle Background colour; An example is shown under the name of each symbol. This will match the sample colouring of the Symbol design shown on the drawing. Symbol colours are indicative only. Actual colour combinations to be specified with each order.

NOTE: Non Stock Item, to be sourced locally, details of a supplier can be found in Appendix B.

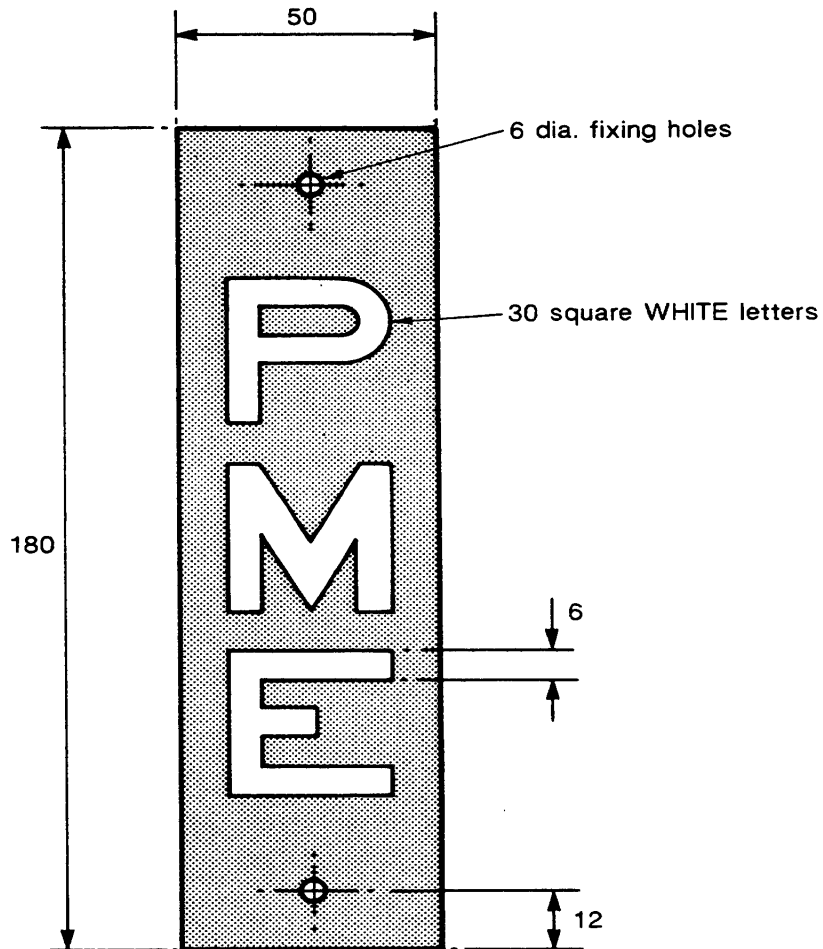
Fig 9b Circuit Colour Plate for 132 kV Wood Poles (Midlands) Cont.



Notes

1. All dimensions in millimetres.
2. Plates to be supplied in sets, one off each as follows
 WHITE ring on RED background
 WHITE ring on BLUE background
 BLACK ring on YELLOW background
 Back of the plate to be BLACK
3. Non Stock Item, to be sourced locally, unless otherwise agreed and stated on order, signs to be vitreous enamelled finish on 1.5mm (16 BG) iron plate, details of a supplier can be found in Appendix B.

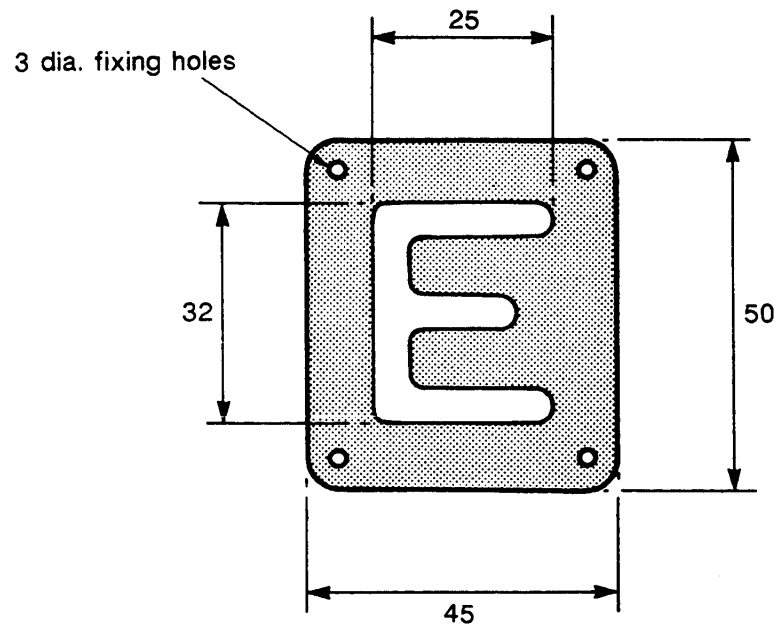
Fig 10 Phase Plate



Notes

1. All dimensions in millimetres.
2. Lettering to be WHITE on RED background
3. Unless otherwise agreed new signs to be manufactured from 1.5mm ABS plastic.
4. Shops Code 30548

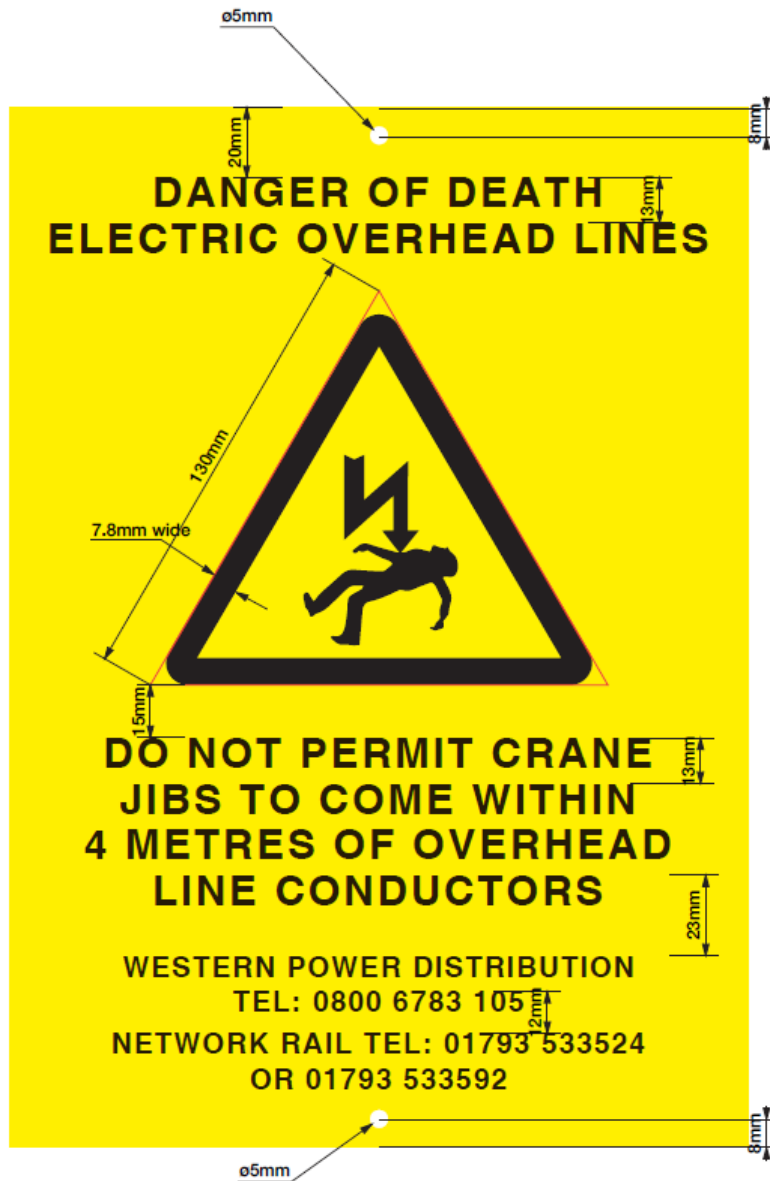
Fig 11 PME Plate



Notes

1. All dimensions in millimetres.
2. Lettering to be WHITE on RED background
3. Unless otherwise agreed and stated on order, signs to be manufactured from 1.5mm ABS plastic, alternatively plates can be non-reflecting stove lacquered finish on 0.7mm sheet aluminium. Back of plate to be Alocrom finished, however this type of sign is not stocked and must be purchased locally, details of a supplier can be found in Appendix B.
4. Non Stock item, to be sourced locally, details of a supplier can be found in Appendix B

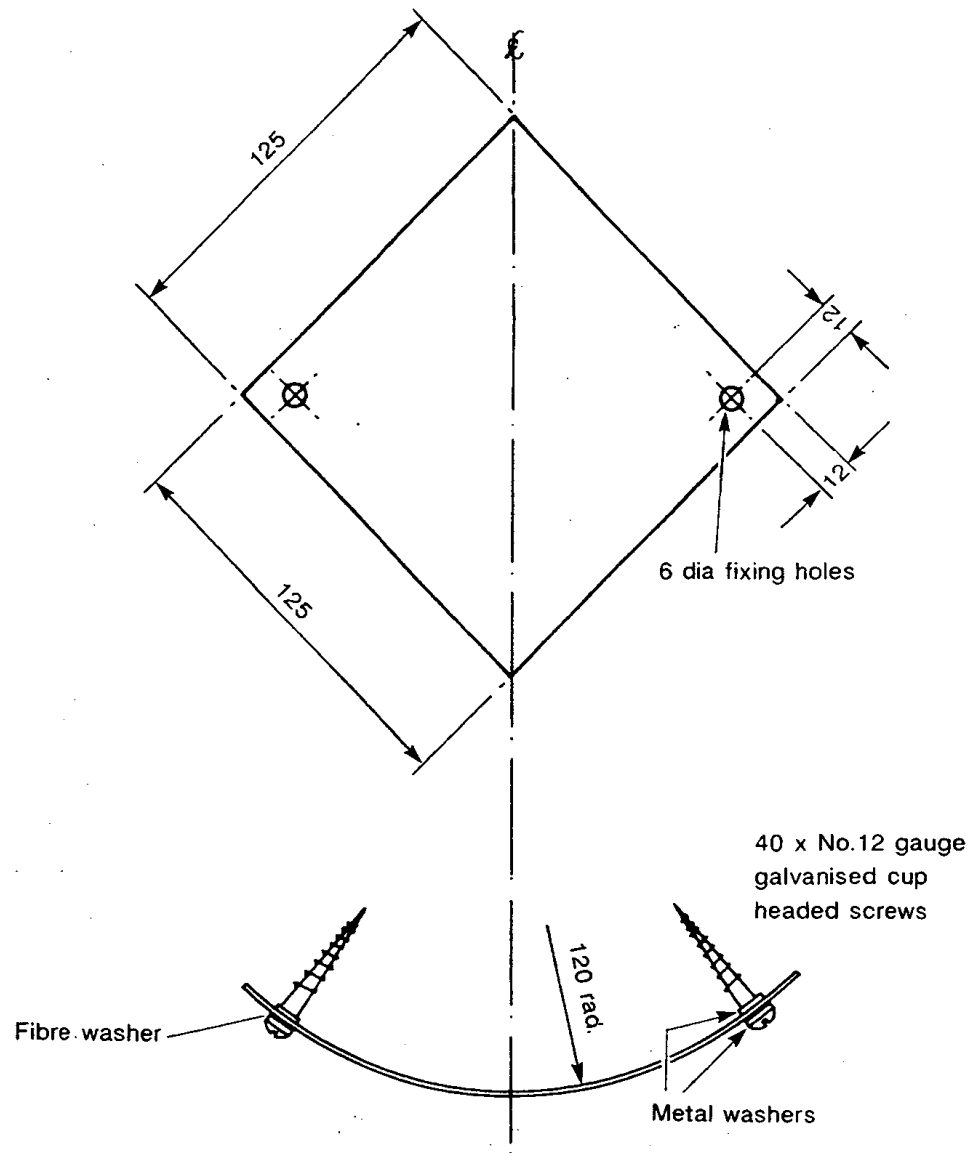
Fig 12 Earthwire Identification Plate



Notes:

1. Lay out of sign colours, symbol and text to conform with requirements of Fig 20
2. Material to be 3mm ABS plastic top surface printed with UV varnish or 2mm Retro Reflective Polycarbonate, underside printed.
3. Drawing for illustrative purposes only, when requesting sign from supplier quote drawing
4. Emergency Telephone Number: 0800 6783 105
5. Non Stock item, to be sourced locally, details of a supplier can be found in Appendix B

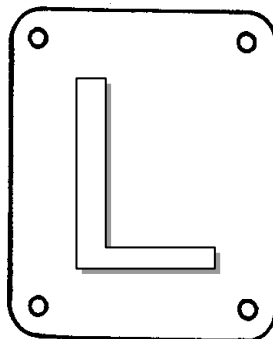
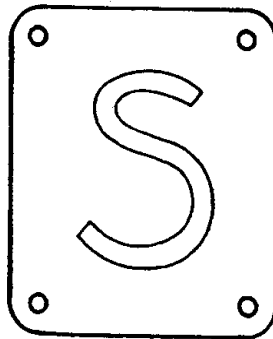
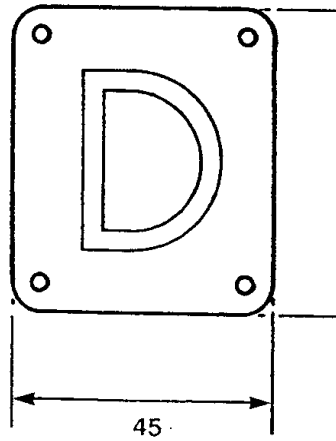
Fig 13 Railway Crossing Notice Plate



Notes

1. All dimensions in millimetres.
2. Plates to be coloured in single colour as specified on order.
3. Non Stock item, characters must be identifiable even if colours have been completely degraded by UV radiation Or have long term UV degradation properties. Acceptable plates can be non-reflecting stove lacquered finish on 1.2mm (18 s.w.g.) sheet aluminium. Back of plate to be Alocrom finished, embossed or characters individually punched out so as to ensure legibility, details of a supplier can be found in Appendix B.
4. Plates to be fitted with 2 x 40mm No 12 galvanised cup headed screws; 4 x metal washers and 2 x fibre washers.

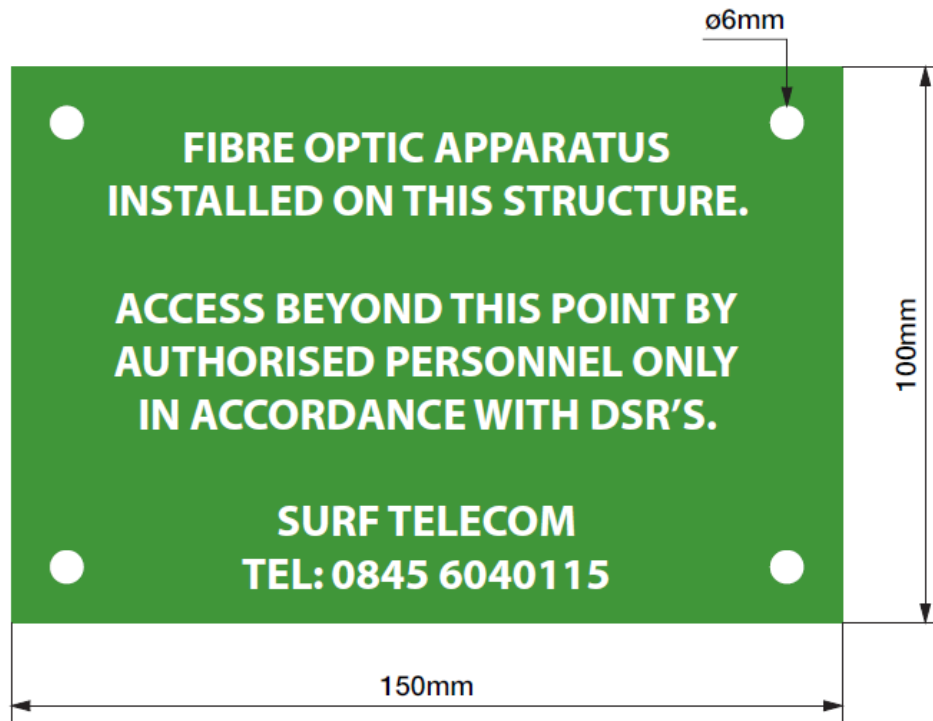
Fig 14 Circuit Identification Plate for 11kV and 33kV Wood Poles



Notes

1. All dimensions in millimetres.
2. Unless otherwise agreed and stated on order, labels to be 1.5mm ABS white plastic with red lettering.
3. Labels to be supplied with 4 x 3mm holes.
4. Shops numbers
 - D = 30526
 - S = 30527
 - L = 42061

Fig 15 Decayed, Suspect and Limited Pole Labels

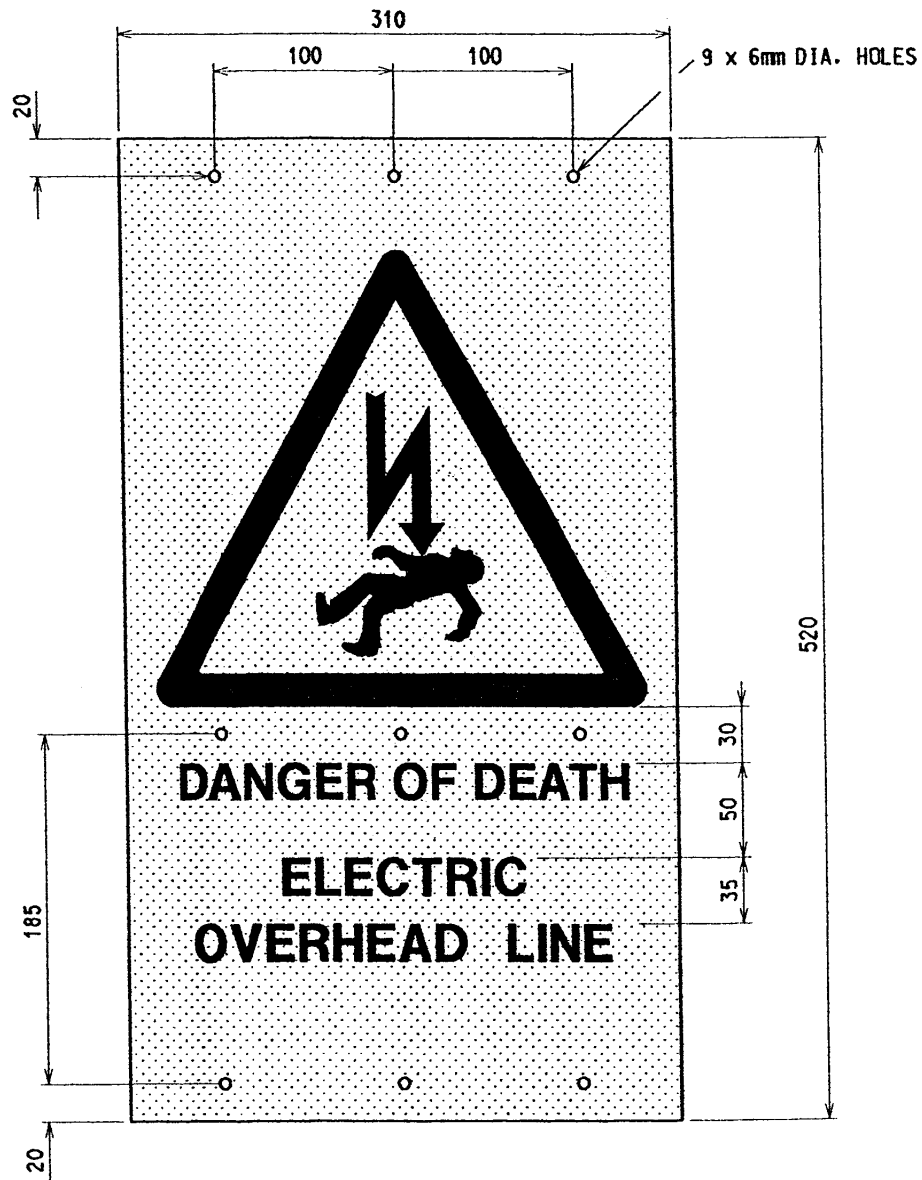


Printed Green onto 1.5mm White ABS complete with 4 x 6mm drill holes and curved to 150° radius

Notes

1. All dimensions in millimetres.
2. Lettering to be WHITE on GREEN background.
3. Non Stock item – Quote Item Code 60732

Fig 16 Fibre Optic Label for Wood Poles



Notes

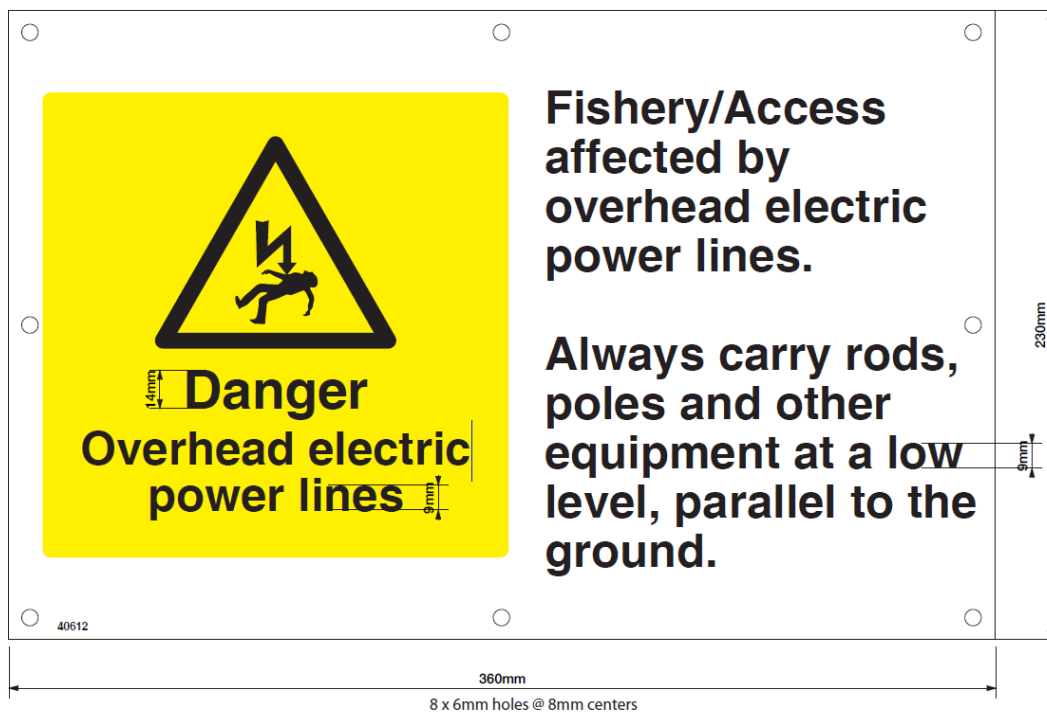
1. Label to BS 5378 PT.1 and ESI registered design.
2. Colours and legend, Danger Symbol, Danger of Death Electric Overhead line Lettering to be BLACK on YELLOW background. Lettering to be Helvetica to be inline with dimensions outlined in Fig 20
3. Material to be 3mm thick ABS, top surface printed with UV varnish.
4. Shops No's
 - E.M., W.M., S. West - 39866
 - S. Wales - 37064

Fig 17 Danger of Death Electric Overhead Line Notice for Camp Site, Caravan Parks, Waterways.



NOTE: Not stocked but quote Shops No. 40611 when ordering.

Fig 18a No Fishing Beyond This Point



NOTE: Not stocked but quote Shops No. 40612 when ordering.

Fig 18b Fishery / Access Sign



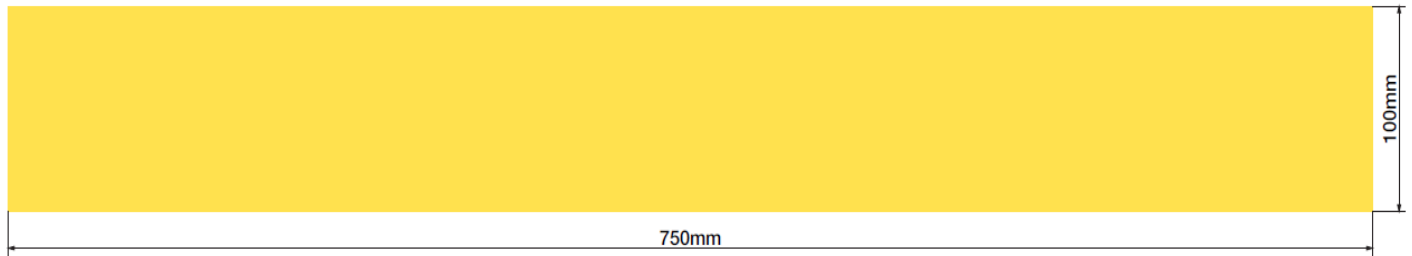
8 x 6mm holes @ 8mm centers

NOTE: Not stocked but quote Shops No. 60205 when ordering.

Fig 18c No Fishing Sign

AHL167

Yellow Reflective Strip



Notes:

1. **Dimensions: 100x750mm**
2. **Material: 1mm Clear Makrolon laminated with Reflexite VC311 Daybright Yellow Reflective**
3. **Shops code: 51214**

Fig 19a Yellow Reflective Strip for Reclosers, Sectionalisers

AHL133

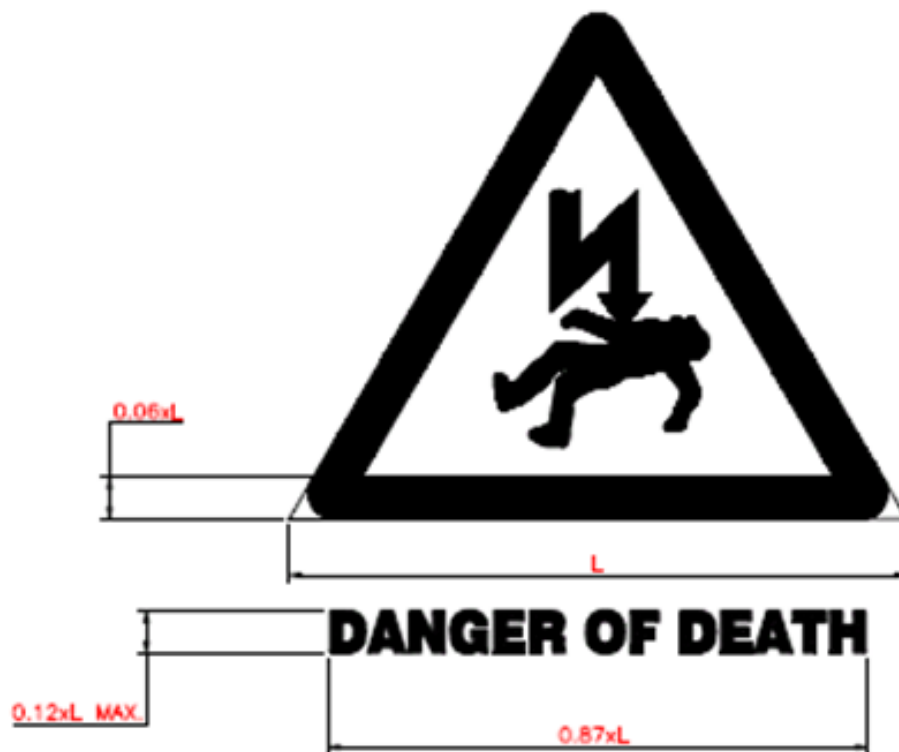
White Reflective Strip



Notes:

1. **Dimensions: 100x750mm**
2. **Material: 1mm Clear Makrolon laminated with Reflexite VC311 Daybright White Reflective**
3. **Shops code: 51213**

Fig 19b White Reflective Strip for ABSD's



1. A safety sign shall incorporate a design, and shall be of the proportions, as shown in the diagram above, except that the height of the text may be in the range of a minimum $.07 \times L$ to a maximum of $0.12 \times L$.
2. The triangle, symbol and text shall be shown in black on a yellow background.
3. The symbol shall not occupy more than 50 per cent of the area within the triangle.
4. A safety sign may include additional text but any such text -
 - (a) shall be in black; and
 - (b) shall be the same size as the text used on the safety sign,
5. And no part of any additional text shall appear on the sign higher than the base of the triangle.

Fig 20 ESQCR Requirements for Design, Colours and Proportions of Safety Signs

APPROVED SUPPLIERS OF SIGNS / NOTICES

Numbering Systems

Ritelite (Stocked in Midlands)
Meadow Park
Bourne Road
Essendine
Stamford
Tel No. 01780 758592

Clydesdale Limited (Non-Stocked)
Wally Sample House
3 Sunbeam Rd
Woburn road Industrial Estate
Kempston
Bedfordshire
Tel No. 01234 855855

Metal Signage

Trico V.E. Ltd
Darrel Nichols
76 Windmill Hill
Colley Gate
Halesowen
West Midlands
B63 2BZ
Tel No. 01384 569555
darrel@trico-ve.co.uk

Plastic & Aluminium Signage

Brissco Signs & Graphics
Mandy Freake
Unit 25 Cater Road
Bristol
Tel No. 0117 3113777

APPENDIX C

SUPERSEDED DOCUMENTATION

This document supersedes ST:OH4N/3 dated September 2013 which should now be withdrawn.

APPENDIX D

ASSOCIATED DOCUMENTATION

ST:OH3A and ST:OH5A - Inspection of Overhead Lines

ST:OH3F - Overhead Line Records of Risks to Public and Risk Reduction Actions

ST:OH4M - Anti-Climbing Devices for HV Lines Up to and Including 132kV

APPENDIX E

IMPACT ON COMPANY POLICY

Whilst this change introduces a new emergency contact number for the whole company there will be little impact on the business as the old emergency numbers assigned to existing signage will be retained.

APPENDIX F

IMPLEMENTATION OF POLICY

These changes are not retrospective.

Staff should continue to use the existing signage until stocks have been depleted at which time the new signs and codes where applicable will be introduced through the introduction of new item codes where applicable.

Where Fibre Optic cable has been installed on poles the label depicted in Fig 16 Fibre Optic Label for Wood Poles should now be used.

APPENDIX G

KEY WORDS

Signs, Notices, Overhead Lines