

## SUMMARY

To enable a greater volume of demand, generation and storage to be connected, Western Power Distribution (WPD) networks are becoming smarter and more active. Creating a more efficient and flexible electricity system will benefit all customers and empower them to be at the centre of the energy revolution.



This report details how WPD has been actively using flexibility, contracted through third parties, to deliver solutions for our network throughout 2018. To get involved with providing flexibility to WPD, please visit [www.flexiblepower.co.uk](http://www.flexiblepower.co.uk).

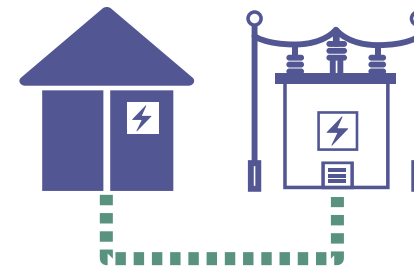
## COVERAGE

2018 was the first year for WPD to use flexibility as a business as usual activity. It saw a significant increase in the areas where we were seeking to use flexibility on our network.



18

Significant reinforcement schemes assessed



76

Primary substations where flexibility sought



395,254

Customers served within flexibility locations

Product offerings to market:

**SECURE**

Pre-Fault

**DYNAMIC**

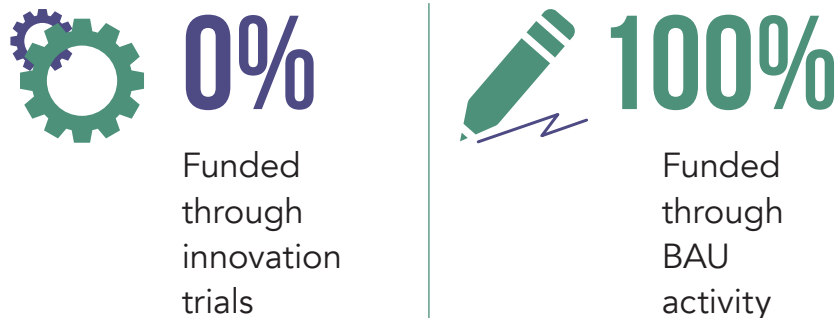
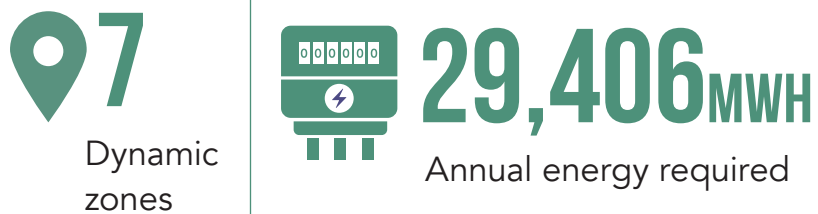
Post-fault

**RESTORE**

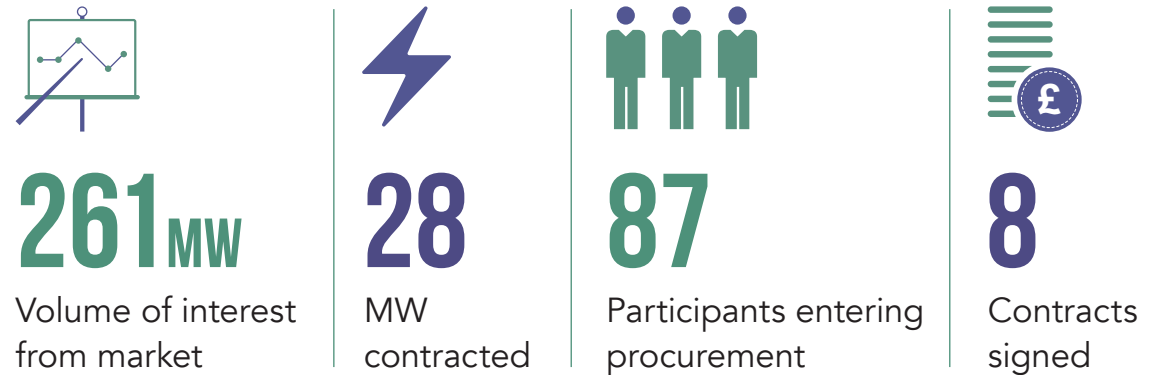
Outage restoration

# SYSTEM NEEDS

Flexibility can help support our system, enabling us to deliver a safe, secure and economic service. As our usage of flexibility as a whole increases, so too will the power and energy we require.



# MARKET RESPONSE



# EARNING POTENTIAL



# CONVENTIONAL REINFORCEMENT

