

Connecting Community Energy

A guide to getting a network connection



Contents



Introduction	3
Getting a community energy scheme up and running	4
Introduction to the electricity network	5
Is there capacity available?	7
Innovation	8
Local supply	9
How to use this guide	10
Fast track energy storage applications	12
Applications for micro-generators on multiple premises	13
Applications for larger scale generators	15
Applications for major schemes	17
Pre-application	18
Application	20
Connection offer	21
Alternative connections	23
Legal considerations	24
Construction and commissioning	25
Glossary	26
Contact us	28

Introduction

Who is this guide for?

This guide is for people developing community energy projects who want to get a connection to the electricity network. It provides an introduction to the electricity network and an overview of the application process for different types of new energy generation relevant to community energy groups. If you are not quite sure where to start with getting your project connected and are confused about the difference between EREC G98 and G99, this guide is for you.

Community energy projects tend to take one of two approaches:

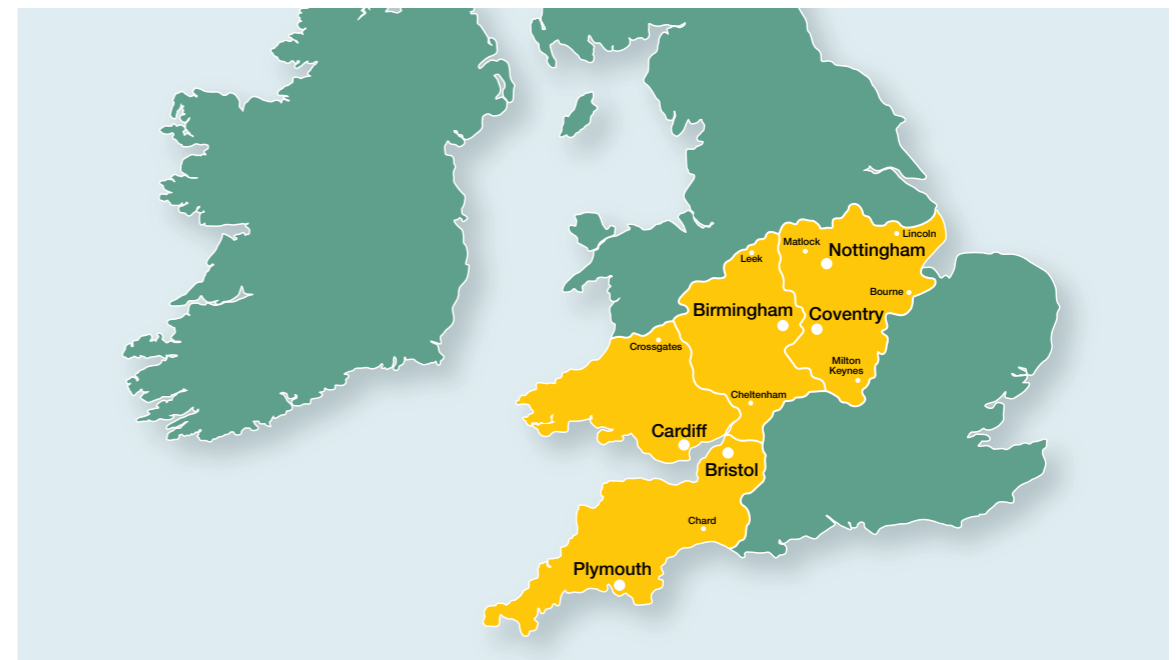
- They enable lots of households and businesses to install microgeneration on their premises through bulk-buying schemes
- They issue a share offer to the community for larger scale generation plant.

Who are we?

We are the electricity distribution network operator for the Midlands, South West and Wales. See the map opposite. If you are not in our area, look up the 'electricity distribution map' on www.energynetworks.org to find out who to contact.

One of our key roles is to provide new connections and modify existing ones for both new generation and demand. We deliver electricity to over 7.9 million customers and a total of over 8,900 MW of generation capacity connected, with a further 7,400 MW in the pipeline.

We aim to make connecting to our network as straightforward as possible, which is why we have worked with Regen to produce this guide. Regen is an independent not-for-profit organisation that uses its expertise to work with industry, communities and the public sector to revolutionise the way we generate, supply and use energy.



Getting a community energy scheme up and running

Western Power Distribution is committed to helping your community energy project connect to the electricity network and play a role in the net zero transition.

Our **Net Zero Communities Strategy** outlines the progress we have made over several years working in collaboration with community energy groups and further supportive actions we are delivering. Below are some tips on where to look for help.

Tips

Are you looking for funding for your initiative?

In England, take a look at the **Rural Community Energy Fund**, **Next Generation Fund**, and in Wales, the **Welsh Government Energy Service**.

Do you need more information and resources?

Western Power Distribution have dedicated **community energy resources**. In our strategy we commit to delivering community energy surgeries and net zero communities festivals which will support community energy.

Community Energy England manage the national **community energy hub** resource library. In Wales, further support is available from the **Welsh Government Energy Service** and **Community Energy Wales**.

Does the opportunity of shared ownership interest you?

Western Power Distribution has a **facilitating generation connection service** which could help you establish a viable partnership.

Do you need to find a local MCS certified installer or a consultant?

Have a look through the **national** company directory.

Do you need planning consent?

Speak to your local planning authority about whether you need to obtain planning permission.

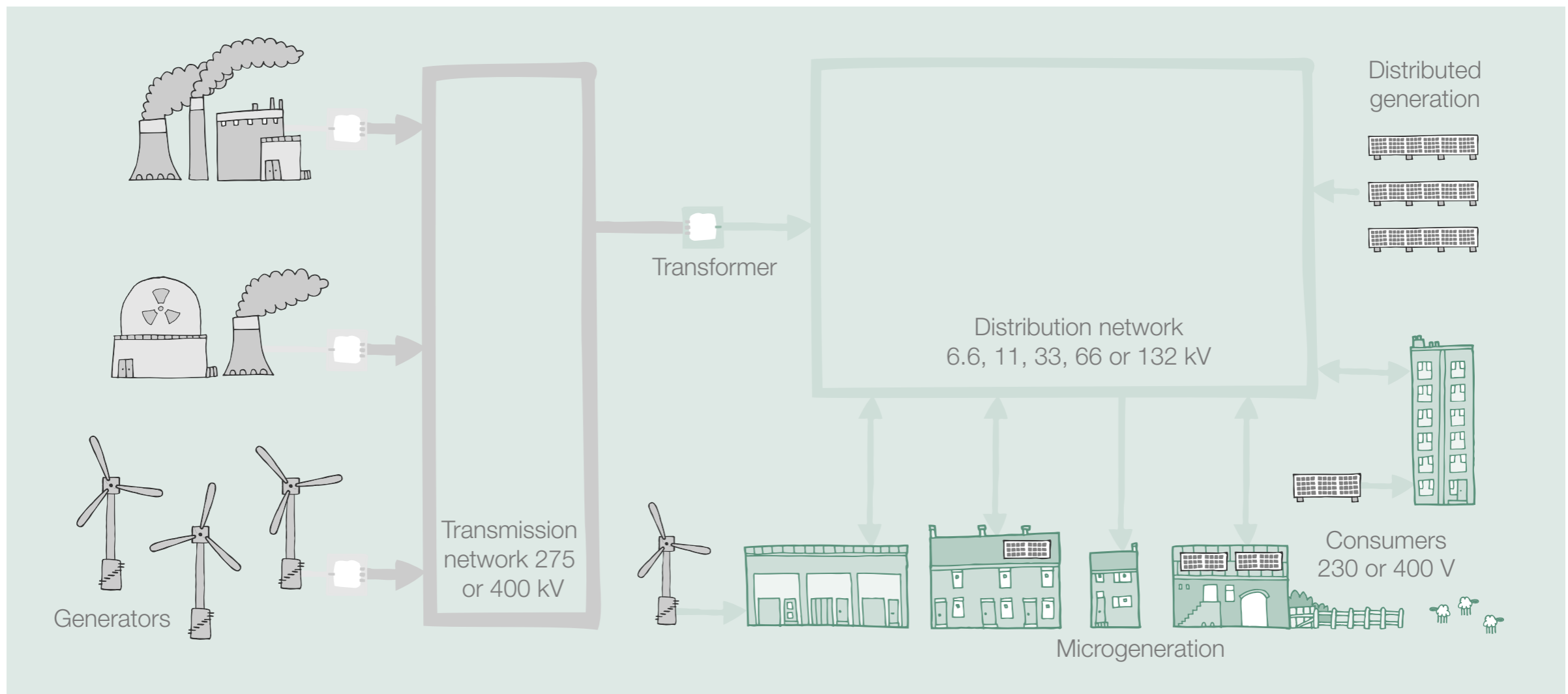


Introduction to the electricity network

In general, electricity flows from the power stations into the transmission network, run by the National Grid, which transports electricity over long distances at a high voltage (275 kV or 400 kV). It then flows into the distribution network, run by us and other Distribution Network Operators (DNOs), to loads, such as homes and businesses. The voltage is reduced in the distribution network to be able to supply loads (from 132 kV down to 230 V).

An increasing number of smaller generators feed energy into the distribution network, known as Distributed Generation (only the very large schemes connect to the transmission network). They can range from microgeneration installations on homes and businesses up to megawatt-scale schemes.

The picture below illustrates how the electricity network operates.



Introduction to the electricity network

Distributed generation can connect to the network through:

- an existing supply line to your house or business
- a modification to an existing connection
- a new connection.

The connection may be to single phase or three phase distribution lines: single phase supply is used for light loads such as household lighting and heating; whereas three phase electric power is used for heavier loads, distribution and transmission. Schemes larger than 20 kW would generally be connected to three phase.



The electricity network was not designed to support high levels of distributed generation and so the increase has introduced new challenges. For instance, it can:

- Make the power flow in the distribution network more dynamic and unpredictable, which can cause:
 - Thermal limits¹ to be exceeded
 - Reverse power flows²
- Contribute to fault levels³ and cause the network to exceed safe levels if it is already close to its fault level limit
- Effect power quality⁴ limits from distorting the shape of the voltage waveform, for example by increasing the levels of harmonics.

To make sure we avoid these problems, it's important that we look at what impact your project may have on the network and, where necessary, carry out reinforcement work to protect the system and existing customers.

Beginners guide to the electricity network

We will publish a new beginners guide to the electricity network, outlining customer journeys for community energy. Further details will be available on [our website](#).

- 1 Thermal limit** – the maximum reliable capacity of the cable determined by the heating effect caused by electrical losses.
- 2 Reverse power flows** – the flow of energy in the opposite direction from consumers, i.e. back up the network.
- 3 Fault levels** – the highest electric current that can exist in a particular electrical system under short-circuit conditions.
- 4 Power quality** – the quality of the voltage, which determines the fitness of electrical power to consumer devices.

Is there capacity available?

Much of the electricity network is now constrained or at capacity due to the amount of distributed generation that has been connected. It is still possible to get an electricity connection, but it might take longer and be at a higher cost due to the need to modify or reinforce the network. The **Western Power Distribution network capacity map** gives an indication of the situation in your area.

A free budget estimate provides an early indication of the cost of getting a new network connection for your project. A connection offer is a more detailed quotation, which can include assessment and design fees if works at EHV¹ are required.

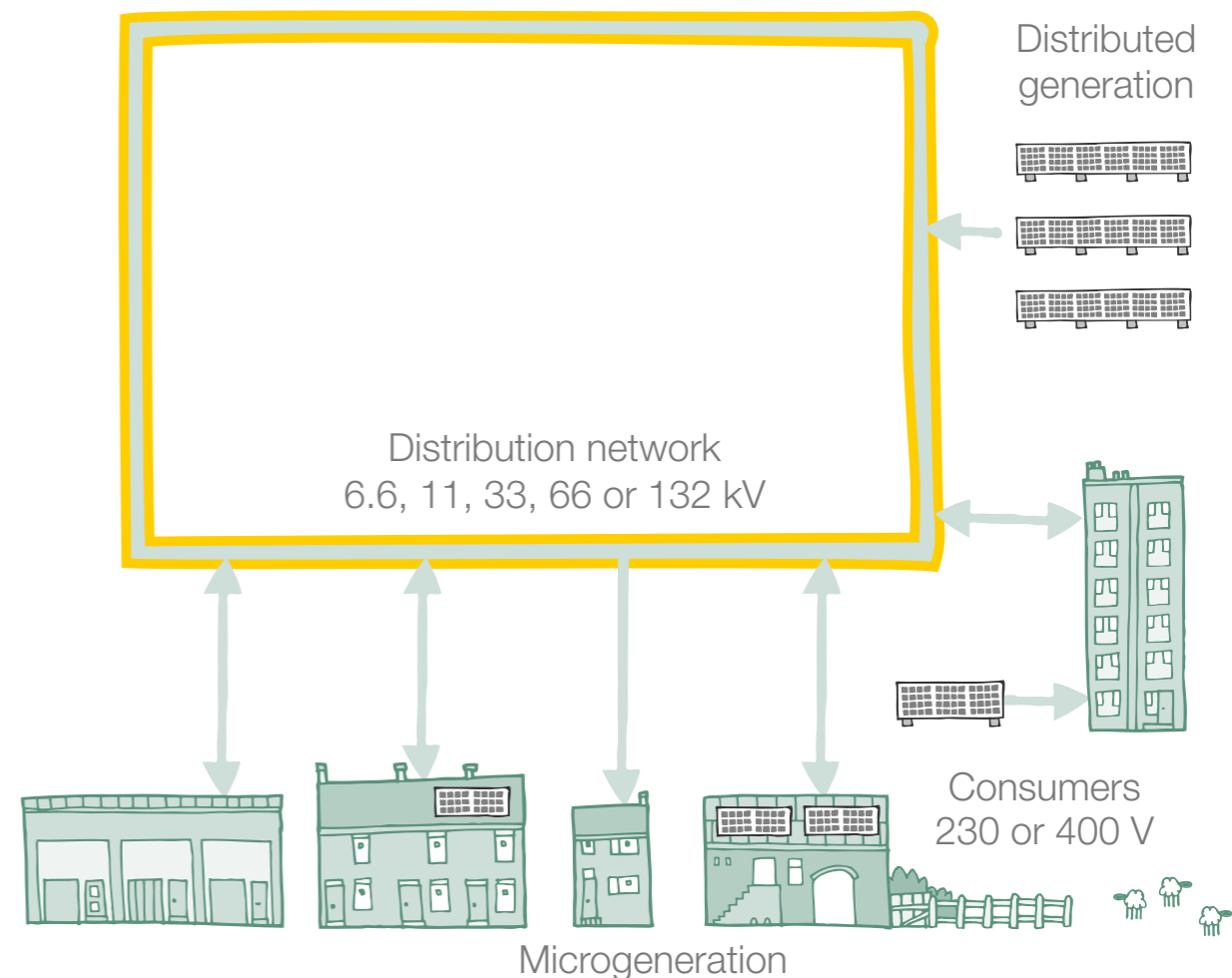
If reinforcement work is required on the network before you can connect, there may be a one-off charge depending on your requirements, which may include:

- Cost of modifying an existing part of the network
- A portion of the cost of reinforcement to increase the electrical capacity of the network.

The cost of your connection will depend on the location, size of your project and specific constraints in your local area. We will set out any costs in your connection offer.

If these costs make your project unaffordable, you may want to consider an 'alternative connection'. These allow us to temporarily reduce your capacity, known as curtailment, at times when the network is under pressure. **See page 23** for more information. You will need to weigh up the pros and cons as your connection cost could be lower, but you may not be able to export as much electricity.

You may also want to explore other innovative solutions to reduce your connection cost, such as energy storage options, private wire opportunities or **collaboration with other generators**.



¹ Extra High Voltage = above 22 kV

Innovation

The role of a Distribution Network Operator (DNO), such as Western Power Distribution, is changing. The higher levels of distributed renewable generation have made the operation of the network more complex. The DNOs are likely to take a more active role in balancing their networks and move towards becoming Distribution Systems Operators (DSOs). This transition has already begun and could accelerate as more distributed generation and energy storage connects to the network, and the electrification of heat and transport continues.

How to engage with us on innovation projects

Community energy groups have an important role to play in the net zero transition of our energy networks, as we outline in **our communities strategy**. Their unique position as a trusted local contact for energy consumers in a given area, provides a useful community engagement opportunity for innovation projects. Community energy groups can act as a partner organisation in innovation projects looking to involve consumers or enable change at the community scale.

Set up a **community energy connection surgery** to discuss your project and suitably innovative project ideas may get referred to the innovation team.

The **Presumed Open Data project** will provide use cases and easy access to data on a new portal to help you innovate.

A list of the innovation projects involving Western Power Distribution is available **here**.

We also publish an **innovation strategy** and **innovation forward plan**.

Register for innovation website updates **here**.

To find out more contact **wpdinnovation@westernpower.co.uk**.

Project	Aims	Overview
Open LV Partners: Western Power Distribution, Centre for Sustainable Energy (CSE), EA Technology, Nortech, Lucy Electric, Regen 2017 - 2020 Project page available here .	To trial and demonstrate an open, flexible platform that could ultimately be deployed in every Low Voltage (LV) substation in Great Britain, that gives access to local electricity data.	Electricity data from Western Power Distribution's low voltage network 'open access' for the first time. This data is being used by community organisations to develop software applications (apps) that will change the way their community uses electricity and relate to the local electricity network. Over 80 Open LV platforms have been installed. Seven community groups are involved in the project and have published case studies on the project pages. Communities can register their interest for data access here .

Our commitments on innovation

- Create and publicise case studies on community energy innovation
- Develop a referral process for suitably innovative projects from community energy connection surgeries and events
- A new specific funding call under the Network Innovation Allowance
- Greater focus on consumer vulnerability in our **innovation strategy**.

More details are in our **communities strategy**.

Local Supply



To date, much of the focus for community energy groups has been on setting up their own renewable electricity generation projects. The natural progression from community owned generation is to use and sell that energy within the local community. There is a growing interest in local supply options that enable:

- Locally-owned generators to sell their power directly to the local community
- Greater control over energy bills and the ability to pass on savings to consumers
- The creation of social enterprises that can support the local community
- A greater connection with and support for local renewable energy projects
- Access to new sources of value through providing local balancing and other services.

There are a number of local supply models that have been developed (see case study) and we have created a short animation that briefly explains the concept, which is available on [our website](#).

Find out more in the Local Supply: options for selling your energy locally paper [here](#).

Local balancing case study: Energy Local

A group of domestic customers come together under an entity called a Community Energy Services Company (CESCo). Their half-hourly smart meter readings are grouped together (or 'virtually aggregated'). This forms one demand curve showing the energy used at different times of day. Local generation is then 'netted off' this aggregated demand curve and a set price is paid to the generator. The CESCo negotiates with a licensed supplier for a time of use tariff for the remaining demand. Customers are no longer settled on a profile but on half-hourly data based on what they actually use and when.

More details available at www.energylocal.org.uk.

How to use this guide



New generation applications fall into a number of categories:

- Connecting micro-generators
- Connecting micro-generators on multiple premises
- Connecting larger scale generators
- Connecting major schemes.

The size of your scheme and the engineering classification of your technology determine which application process you should follow. The cut-off points for the size and the different engineering classifications are explained in the central boxes on the following page.

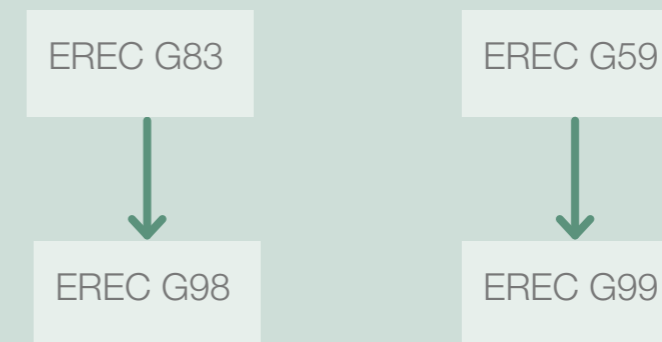
Follow the flow chart on the next page to find out which application process applies to your project and what section of the guide is relevant to you.

Talk to us about your plans at a **bookable connection surgery** and meet our local connection teams. Our local planners are trained to help community energy groups.

The following sections then set out the steps you need to take to apply for an electricity connection. And don't forget the glossary at the back for any terms you don't understand – **see pages 26-27**.

Engineering recommendations

From the 27 April 2019 there are changes in the engineering recommendations (EREC) that are required for generation projects connected to the electricity network. EREC G83 is being replaced by G98 and G59 by G99.

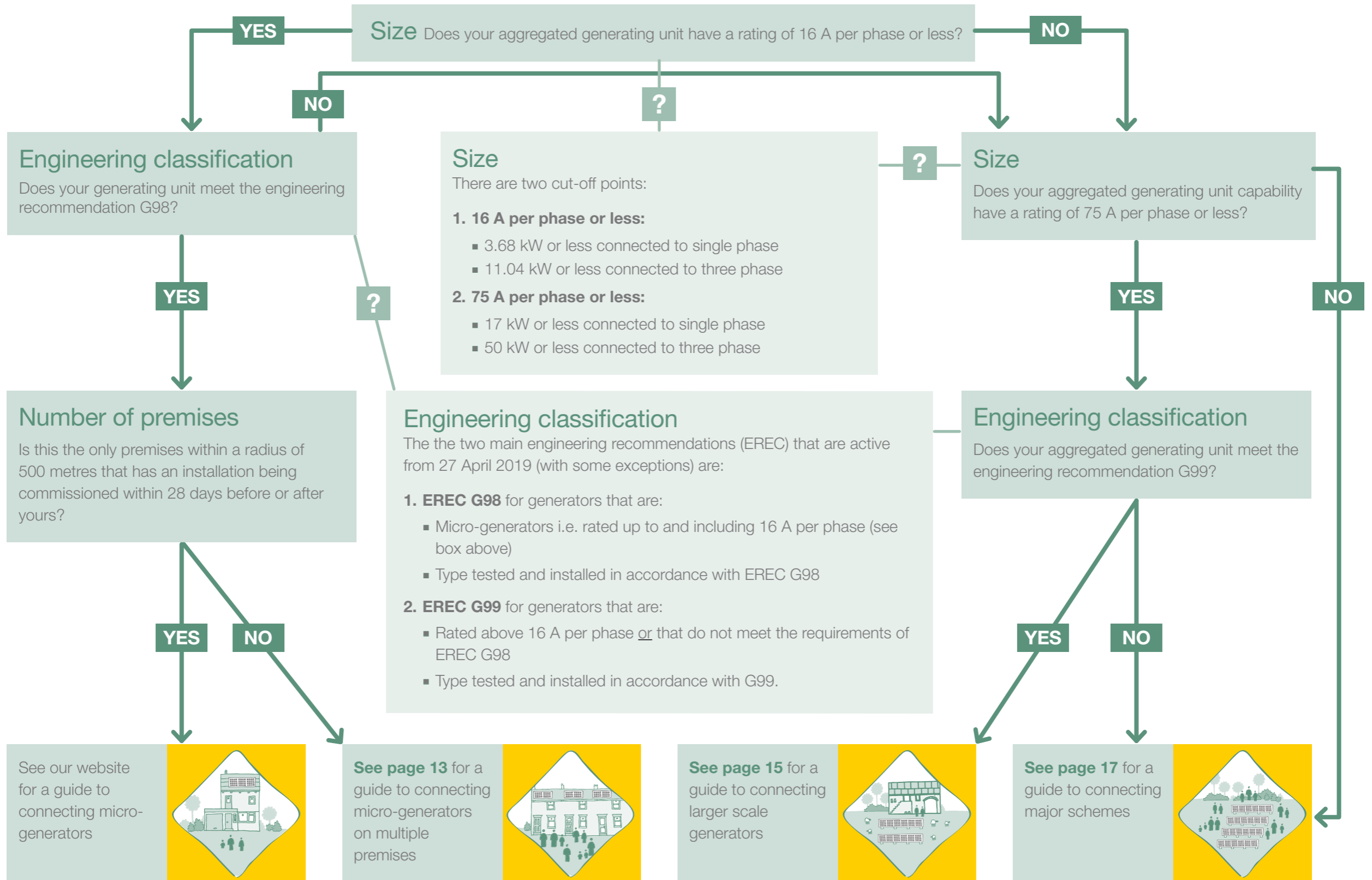


There are some differences in the EREC G98 and G99 compared with the previous requirements. EREC G99 has a number of new aspects, including four new types (A to D) depending on the capacity of the project.

Customers must ensure they are compliant with the new specifications otherwise they will not be permitted to commission their generator(s). They apply to new connections and significant replacement of existing generation projects (e.g. an inverter). Further details are available on [our website](#).



The right application process for your project



Fast track applications for energy storage

A fast-track application route is available for energy storage projects to connect to the electricity network that meet specific requirements and would normally follow the standard EREC G99 application route.

This section is relevant to energy storage projects where:

- There is one single phase connection required
- Customers wish to install energy storage on existing EREC G83 or G98 compliant solar PV (or other generation type) system using a separate inverter
- Customers wish to install a new solar PV (or other generation type) with energy storage using separate EREC G98 compliant inverters.

Please note - Any installation that can operate in island mode, without an active supply from the network, is out of the scope of EREC G98 and should comply with EREC G99. This can apply to energy storage and vehicle to grid electric vehicle charger installations.

Energy storage projects are growing in popularity and the initial application process was not designed with this technology in mind. The fast-track application process is designed to help reduce barriers for smaller energy storage projects and make it quicker and simpler to obtain consent to connect to the network.

This application process requires us to give permission ahead of installation and commissioning. Notifying us after this has occurred is not compliant with the process.

The fast track process is only applicable if all of the following conditions are met:

- The conventional Power Generating Module (e.g. the PV installation) is rated at up to 16A (3.68kW) per phase (ignoring the impact of any Export Limitation) and is Fully Type Tested to EREC G98.
- The electrical energy storage installation (e.g. the battery storage) is rated up to 16A (3.68kW) per phase (ignoring the impact of any Export Limitation) and is Fully Type tested to EREC G98.
- An Export Limitation Scheme is installed that is compliant with EREC G100 and that limits the Export to 16A (3.68kW) per phase or less.

Further information is available on [our website](#).

Applications for micro-generators on multiple premises



Many community energy groups have set up bulk-buying schemes for small scale renewable energy generation on homes and commercial buildings. These enable people in the community to install renewables at cheaper prices with additional advice and support from the local community energy group. Micro-generator projects on multiple premises fall under the G98 application process. If you are not sure which process is right for you, **go back to page 11.**

This section is relevant to projects where:

- You are connecting more than one installation within 500 metres from each other within a 28 day period
- Each installation has a total rating of 16A per phase or less
- All the generation complies with the requirements of EREC G98.

When more than one microgenerating unit is installed within a 28 day period in a local area, it is important that we check it will not put too much strain on the local network. Sometimes it is necessary to modify the network to make sure it can handle the additional energy generation, which is why you have to get approval from us before you can connect.

The installer you use to roll out the scheme is responsible for completing the 'G98 multiple premises connection' application form and liaising with us, but it is important that you discuss your plans with us as early as possible, to be aware of the process and to pre-empt any problems.

> See the next page for the main tasks for getting connected





Getting connected - microgeneration on multiple premises

Top tip

Check that your installer uses 'type tested' equipment according to EREC G98, which simplifies the connection process.

What to expect from us

We will be able to tell you:

- Whether the network is likely to be able to handle the additional energy generation, and if not;
- What the costs of reinforcing the network might be if applicable to your scheme.

Costs explained

If we need to modify the existing connection or reinforce the wider network to increase the electrical capacity, we may make a one off charge although this is dependent on the circumstances.

Getting started – find an installer(s), start promotional activities and gauge interest.

Discuss your plans with us – find out if the network is already constrained in your area and let us know where and at what scale you plan to roll out your scheme.

Submit an application form – details of each installation will need to be included and submitted by the installer.

Accept or reject the connection offer – we will come back to you with an offer including any conditions or charges for your connection.

Installation and commissioning – we will complete any work on the network and your installer will ensure compliance with EREC G98 and notify us within 28 days of commissioning.

Checklist for your conversation with us:

- Total number of installations
- Location and size of each installation
- Rough timescale

Find the form

You need the G98 application form, **available on our website.**

Step by step:

- Your installer will ensure that construction and commissioning is in line with EREC G98
- We will complete any work on the network
- Your installer will notify us within 28 days of commissioning each installation by filling in the G98 installation document **available on our website.**

Applications for larger scale generators



Larger scale generator installations fall under the G99 simplified application process. For example, a large domestic solar PV system (over 3.68 kW or about 18 panels) on single phase or a large agricultural or commercial solar PV system (over 11 kW or about 54 panels) on three phase would fall into this category. If you are not sure which process is right for you, **go back to page 11**.

This section is relevant to installations that meet all of the following criteria:

- Type tested according to EREC G99 (fully or partially) or G98
- A total rating of up to 75 A per phase
- The connection requires a minimum amount of network extension
- Makes use of the revenue support on offer.

This may apply to installations on community buildings and small commercial sites that are funded through a community share offer or come forward through a bulk-buying scheme. The installation may be building-mounted or free-standing, and could be up to 17 kW on single phase or up to 50 kW on three phase.

> See the next page for the main tasks for getting connected

Reminder - Make sure to follow the correct order when you notify and complete the connection process. This needs to be step-by-step, using the correct forms. The relevant detailed process is available in the appropriate **EREC G99** sections.





Getting connected - larger scale generators

Checklist for your conversation with us:

- Location of site
- Size of installation
- Rough project timeline

Tip

It is really important you fully understand your connection offer. Please ask questions if anything is unclear.

Tip

If your capacity is over 30 kW and you want to export energy, you need a Half Hourly meter and to appoint a meter operator ([more on page 25](#))

Testing explained

Your installer must complete tests in order to be compliant. EREC G99 may require us to witness aspects of the installation. Particularly for partially type tested installations.

Find an installer – one that uses type tested equipment and is MCS certified.

Discuss your plans with us – find out if the network is already constrained in your area and whether there will be charges on your connection.

Submit an application form – it requires details of your site and equipment you intend to install. Your installer will submit this on your behalf.

Accept or reject the connection offer – we will come back to you with an offer including any conditions or charges for your connection.

Construction and commissioning – once installation and connection is complete, tests and checks are required.

Find the form

You need the G99 Simplified Application Form A.1 for fully type tested installations, **available on our website**. Other forms apply for installations that are not fully type tested.

Costs explained

If work is required on the network before you can connect, there will be a one-off charge, which may include:

- Cost of modifying an existing part of the network
- A portion of the cost of reinforcement to increase the electrical capacity of the network.

Find the form

You need the G99 installation document, **available on our website**.

Tip

Stay in close contact with us throughout construction so you're aware of the timeline for any reinforcement works.

Applications for major schemes



More and more communities across the UK are recognising the benefits of investing in and building community owned energy generation projects.

The application process for larger projects is more complex and can take longer. Major schemes fall under the G99 standard application process and need to demonstrate compliance, which applies to installations that:

- Have an aggregate rating of over 75 A per phase
- or
- Have not been type tested according to EREC G98. Full or partial type testing under EREC G99 may be applicable.

If you are not sure which application is right for you, go to page 11.

You can find more detailed information about the connection process in our Connections Charging Statements [on our website](#) and in the Electricity Network Association guides available at www.energynetworks.org.

Reminder - Make sure to follow the correct order when you notify and complete the connection process. This needs to be step-by-step, using the correct forms. The relevant detailed process is available in the appropriate **EREC G99** sections.

The main tasks for getting connected are shown below with more detail on the following pages:

Pre-application – project planning; information gathering; discussions with us ([see page 18](#)).



Application – submit formal connection application and we will prepare connection design and connection offer ([see page 20](#)).



Connection offer – assess options and conditions and accept or reject connection offer ([see page 21](#)).



Legal considerations – contracts; wayleaves and waivers ([see page 24](#)).



Construction and commissioning – connection infrastructure construction; testing and commissioning of equipment ([see page 25](#)).





Pre-application

- Consider whether you have the time and resource to go through the application process yourselves, or whether you need the help of external consultants. If you have partnered with a developer, they will probably handle the application process in-house
- Look at our **network capacity map** online to get an idea of whether we will be able to connect your project without expensive reinforcement work. You can also request plans through **our website** for exact locations of underground cables, overhead lines and other electrical equipment
- Discuss your plans with us at an early stage. We can talk about:
 - How close your proposed project is to the network and whether there is any capacity available
 - The process of applying and connecting to the network
 - The choices you will need to make about who will carry out any connection works and the type of connection you go for.
- Consider asking us for an **initial budget estimate** free of charge to get an early indication of the likely cost when the full details of the scheme are not known or the timescales are uncertain. Be aware that assessment and design fees could be payable once you receive a connection offer.

Contact us on:

- Midlands – 0845 724 0240
- South Wales – 0845 601 3341
- South West – 0845 601 2989

Or book a connection appointment. Details on our website [here](#).

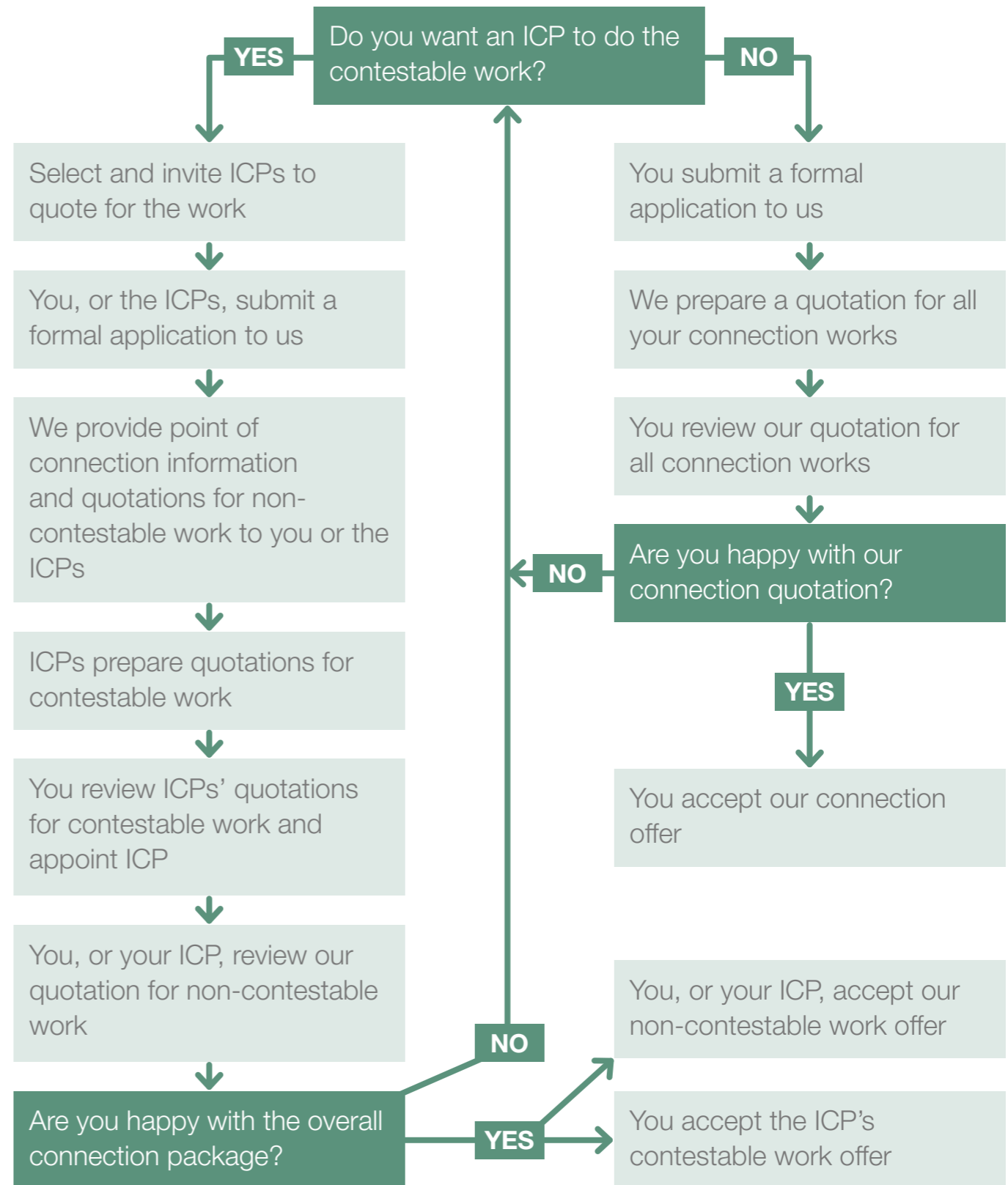




Pre-application

Decide who will construct the connection. Some of the work is **non-contestable**¹ and some is **contestable**². You will need to decide whether to appoint an Independent Connection Provider (ICP) to do the contestable work or whether you'd like us to do it all – this will affect the connection process. The flow diagram (on the right) might help you decide.

- 1 **Non-contestable** – work must be carried out by us and is not open to competition.
- 2 **Contestable** – work is open to competition and can be conducted by ICPs.





Application

- Submit a formal connection application, the G99 Standard Application Form which you can **download from our website**. Generators are defined in Type A to D in G99, relating to the voltage level of the connection point and the registered capacity of the project. More information can be found on the **ENA website**.
- You may need support from us or a consultant to help you complete the form, which requires comprehensive data about your generating equipment and its location.
- If you want us to do all the work – both the contestable and non-contestable – then you will submit the application form. If you appoint an ICP, they will liaise with us on your behalf.

Information checklist

- Contact details and site address
- Whether you need a budget or a formal offer
- A site layout plan showing where the connection is required
- The capacity of the connection
- Export and import capacities
- Any special equipment characteristics





Connection offer

- Once we have received your application form, we carry out a number of studies to assess the impact of your generation on the network, which may include looking further up the system at higher voltage levels, at the direction of flow of energy from your generating project and at the impact on fault levels. This may include Assessment and Design fees and you will be notified of any amounts payable.
- Timescales for us to provide you with a quote:
 - For both contestable and non-contestable work:
 - 45 working days for LV¹ generation
 - 65 working days for HV² and EHV³ generation.
 - For non-contestable services only:
 - 30 working days for LV generation
 - 50 working days for HV and EHV generation.
- The quote will contain details of the connection charges, which are broken into categories in the box on the right, as well as options available to you and any conditions that you must agree to.

- Low Voltage** = less than 1 kV
- High Voltage** = 1 kV to 22 kV
- Extra High Voltage** = above 22 kV

Assessment and Design fees

For proposed connections that require work at EHV³ and above we will charge for the time taken to prepare the connection offer. These fees are payable whether or not you accept the connection offer. Notify us in writing within 10 working days of receiving our notification in order to avoid any charges we incur up to that point.

For reference generation projects at EHV, assessment and design fees are from £4,000 (+VAT).

Connections offers that require work at LV¹ and HV² incur assessment and design fees which are only payable if you accept the offer. Further details are available [here](#).

Connection charges

The cost of connection can be broken into three categories:

- New infrastructure for the equipment to connect your generating project (the point of supply) to the point of connection to the network. These are sole use assets and so are paid for by you in full
- Reinforcement of the existing network to increase the electrical capacity and enable the flow of electricity onto the network. You will pay a portion of this cost based on the capacity you require
- Recovery of costs from previous works carried out for other connections. This will only apply if you use assets provided for other connection customers within the last 10 years.





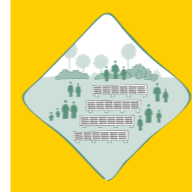
Connection offer

There are several options that you will need to consider:

- If your connection requires expensive reinforcement work, it is worth considering an ‘alternative connection’. This allows us to temporarily reduce your capacity, known as curtailment, at times when the network is under pressure. You will need to weigh up the pros and cons as your connection cost could be lower, but you may not be able to export as much electricity. More details on **next page**.
- If you have asked us to quote for both the contestable and non-contestable work, you will need to decide if you will accept the quote for all connection works or whether you would like an ICP to carry out the contestable works
- When we have more than one application for a connection to the same part of the network and these connections cannot be accommodated without reinforcement, the applications become **interactive connection applications**¹. If this happens, we will let you know in writing along with your position in the queue and the process for accepting interactive connection offers.

- 1 Interactive connection applications** – when two or more applications for connection are made that make use of the same part of the existing or committed network or otherwise have a material operational effect on that network.





Alternative connections

Alternative connections are being rolled out in our distribution area and can be a viable option for projects which are prepared to have their export capacity reduced. There are four alternative connection types available:

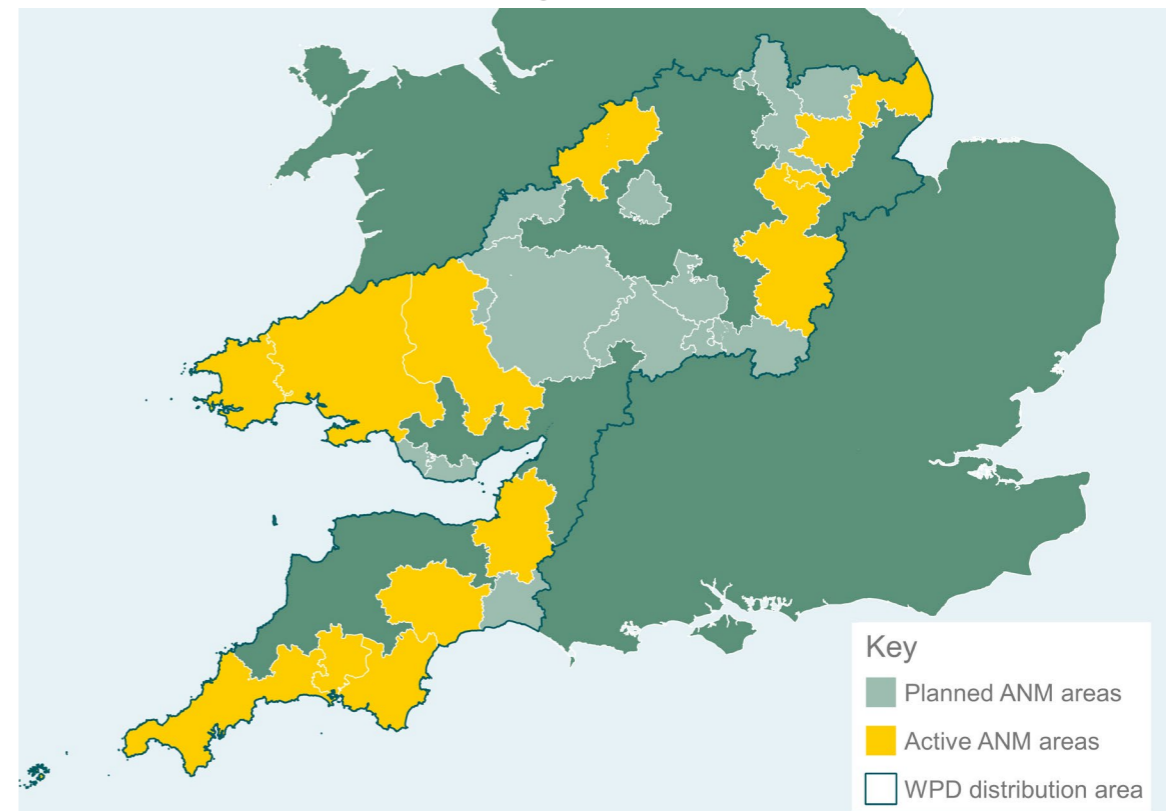
- **Export Limiting** – available across our network. The use of hardware to limit the export capacity to an agreed set maximum for a given connection. The hardware must meet specified requirements and relevant power quality standards.
- **Timed** – available across our network. We will give you an operating schedule that says when you can generate and at what capacity, based on predictable loads and generation patterns.
- **Soft-intertrip** – available in all our ‘non-complex networks’ not due to be opened for ANM within two years – see our [website](#) for a list. Through real-time monitoring of specific assets or limits, we can reduce your generating capacity at times when the asset is under pressure or the limit is close to being exceeded.
- **Active Network Management (ANM)** – allows real time monitoring of all the limits on the network and allows us to allocate the maximum amount of capacity to you based on the date your connection was accepted within the area. Contact WPD to enquire about in this type of connection in your area.

The terms and conditions that we will allow you to connect under one of the above scenarios will be captured under an enduring connection agreement. An example alternative connection offer is available [on our website](#).

The map of the WPD ANM areas (right) shows those areas that are driven by Transmission and Distribution network constraints respectively.

For more details on alternative connections see our [website](#).

Map of Active Network Management areas



Last-in First-Out (LIFO) – If there is more than one connected generator in a given area of ANM, then curtailment of generators is managed in a Last-In-First-Out (LIFO) procedure. This means that a given project is provided a place according to when they applied to connect. This position will dictate when they are curtailed and when this is lifted in comparison to other generators. Those who applied first will be curtailed last and restored first. Those generators who applied last will be curtailed first and restored last.



Legal considerations

There are a number of agreements and contracts that need to be put in place before we can connect your generation to the network. You may wish to seek professional advice if you are in any doubt.

- You, or your ICP, will have 90 days to formally accept the **connection offer**, as long as it does not become interactive with another connection offer(s).
The offer then becomes the contract between you, or your ICP, and us to meet the terms, conditions and payments specified.
 - You will also be required to enter into a **connection agreement** with us and to comply with the national terms of connection (NTC), available [here](#). This is the lifetime agreement for the connection once it is energised and includes our rights and obligations to one another. For instance, you will be required to comply with the Distribution Code (see www.dcode.org.uk for more information).
 - Where the connection works are carried out by an ICP, an **adoption agreement** is put in place for us to adopt the assets constructed and will be between:
 - Us and your appointed ICP
 - When the equipment required to connect your generation to the network (e.g. cables, substations) is on someone else's land, we will need to secure **land rights** through an **easement**¹, **wayleave**² or **land transfer**³ for the asset over the long term. We may also require **consents** for overhead lines, environmental restrictions and planning. More information is available on [our website](#).
- 1 **Easement** – a right to cross or otherwise use someone else's land for a specified purpose.
 - 2 **Wayleave** – a right of way granted by a landowner.
 - 3 **Land transfer** – transfer of ownership from the landowner to us.





Construction and commissioning

- Stay in touch with us and your ICP (if you have one) during the construction phase. It is essential that we are working to the same timelines and that all work meets the required standards.
- Once construction is complete, it is your responsibility to carry out full commissioning tests which we may need to witness. You need to:
 - Provide us with detailed information about the test scope at least 15 working days before the proposed commissioning date
 - Submit **registered data**¹ to us
 - Put commercial arrangements in place and keep your supplier informed of when you expect to start generating
 - Make sure you have metering arrangements in place (see the box on the right)
 - Send us a completed commissioning form within 30 days of completing the commission tests. This is **available on our website**.

¹ **Registered data** – the final confirmed parameters of the generation equipment, including the location, export and import requirements.

Checklist of other tasks

Whilst we (or your ICP) are constructing your connection, you should be:

- Completing the construction of your generation project
- Working with us to negotiate easements or wayleaves
- Appointing a meter operator (see box below)
- Finalising negotiations with a supplier who will purchase your energy
- If required, we will issue you with an export MPAN that the supplier can register against.

Metering explained

There are two categories of meter:

- Non-Half Hourly (NHH) for generation less than 30 kW. It is the responsibility of the supplier to appoint the meter operator and collect the data
- Half Hourly (HH) for installed generation greater than or equal to 30 kW. You must appoint a meter operator. See the Association of Meter Operators for a list of accredited providers and further information on the services they can provide.



Glossary

Jargon buster for community energy

Our new jargon buster helps community energy groups navigate the world of new network connections. Find out more on [our website](#).

Active Network Management (ANM) – The use of distributed control systems to continually monitor all the limits on the network, along with systems that enable the correct level of generation to meet demand.

Adoption Agreement – An agreement which sets out the terms and conditions for the DNO to adopt assets which have been constructed by an ICP.

Aggregator – Aggregators combines and sell flexible load adjustments and on-site generation flows from multiple consumer sites.

Alternative connections – A collection of four different connection types which temporarily reduce the export capacity of a project in a fixed or varied approach.

Connection offer – A formal offer from the DNO containing terms, conditions and charges for the DNO to make the connection. Issued either to you or the ICP where applicable.

Connection Agreement – An agreement between you and the DNO detailing terms and conditions for connecting to and remaining connected to the DNO's network.

Contestable – Work that is open to competition and can be conducted by Independent Connection Providers (ICPs).

Community energy – Community projects or initiatives focused on reducing energy use, managing energy better, generating energy or purchasing energy, with an emphasis on community ownership, leadership or control where the community benefits.

Curtailement – A temporary reduction in electricity generation imposed on the generator.

Distribution network operator (DNO) – The DNO owns, operates and maintains a distribution network and is responsible for confirming requirements for the connection of distributed generation to that network.

Distributed generation (DG) – A generating scheme that is connected to the distribution network.

Engineering recommendations (EREC) – The technical standards developed by the [Energy Network Association](#).

Fault level – The highest electric current that can exist in a particular electrical system under short-circuit conditions.

Harmonics – Distortions to a current or voltage wave shape. Harmonic frequencies in the power network are a frequent cause of power quality problems.

Independent Connection Provider (ICP) – Companies that have the necessary accreditation to provide new connections in competition with the DNOs. See the see the Lloyds Register website for a list.

Interactive connection applications – When two or more applications for connection are made that make use of the same part of the existing or committed network, or otherwise have a material operational effect on that network.

Island mode – an installation capable of operating without an incoming supply of electricity from the network.

Glossary continued

Micro-generator – Defined in EREC G98 as “A generating unit together with any associated interface equipment rated up to and including 16A per phase, single or multi-phase 230/400V AC and designed to operate in parallel with a public low voltage Distribution System”. I.e. up to 3.68 kW on a single-phase supply and 11.04 kW on a three-phase supply.

Network – In this case we are referring to the electricity distribution network. In general it is a system of electricity lines and equipment that connects the transmission system and distributed generation to end users. In England and Wales the distribution systems are the lines with a voltage less than or equal to 132 kV.

Non-contestable – Work that must be carried out by us and is not open to competition.

Power quality – The quality of the voltage, which determines the fitness of electrical power to consumer devices.

Registered data – The final confirmed parameters of the generation equipment, including the location, export and import requirements supplier meter operator.

Reinforcement – Work undertaken to increase the electrical capacity of those parts of the network that are affected by the introduction of new generation or demand.

Reverse power flow – The flow of energy in the opposite direction from end users in the network.

Storage – technologies which are able to absorb and release energy when required and provide a number of services to the distribution network.

System voltage – The voltage at which the network is operated.

Thermal rating – The current carrying capacity of the cable or overhead conductor determined by the heating effect caused by electrical losses.

Transmission network – A system of electricity lines and equipment that connects power stations and substations. In England and Wales the transmission system is rated above 132 kV.

Voltage unbalance, fluctuation or flicker – Deviations in system voltage.

LV – Low Voltage = less than 1 kV networks, i.e. 230/400 V.

HV – High Voltage = networks operating between 1 kV and 22 kV, i.e. 6.6 kV or 11 kV.

EHV – Extra High Voltage = networks operating above 22 kV, i.e. 33 kV, 66 kV or 132 kV.



Contact us

Midlands – 0845 724 0240

wpdnewsuppliesmids@westernpower.co.uk

South Wales – 0845 601 3341

wpdnewsupplieswales@westernpower.co.uk

South West – 0845 601 2989

wpdnewsupplies@westernpower.co.uk

www.westernpower.co.uk

 [@wpduk](https://twitter.com/wpduk)

 [@wpduk](https://www.facebook.com/wpduk)

Webchat